

Hall Current Sensor- TU301-OCA

I_{PN}=50..300A

For the electronic measurement of currents:DC,AC,pulsed,mixed,
 with a galvanic isolation between the primary(high power)
 circuit and the secondary(electronic) circuit.



RoHS COMPLIANT

● Operating performance (AT =25°C)

Performance	Model	TU500 OCA	TU750 OCA	TU101 OCA	TU201 OCA	TU301 OCA
Primary nominal r.m.s. current	I _{PN} (A)	50	75	100	200	300
Primary current measuring range	I _P (A)	0~±50	0~±75	0~±100	0~±200	0~±300
Supply voltage	V _{CC}	±15V (±5%)				
Output voltage	V _{OUT}	4-20mA				
Current consumption	I _C	≤±50mA @ ±I _{PN}				
Response time	t _r	< 300ms				
Linearity	ε _L	≤±1% @0~±I _{PN}				
Accuracy	X	±2 % @I _{PN} (DC)				
Response Voltage		380V AC				
Isolation voltage	V _d	3KV @50/60Hz/1min				
Frequency bandwidth	f	DC~100Hz				

● General data

Operating temperature	T _O	-25 ~ +85°C
Storage temperature	T _S	-40 ~ +85°C
Mass	m	26g
Note		Insulated plastic case recognized according to UL 94-V0

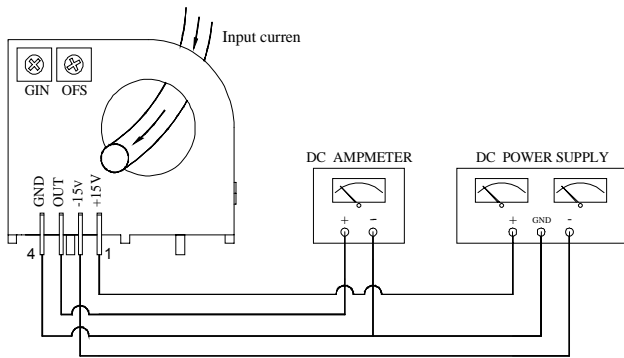
● Applications

- | | |
|--------------------------------------|---|
| ◆AC variable speed drives | ◆Static converters for DC motor drives |
| ◆Battery supplied applications | ◆Switched Mode Power Supplies(SMPS) |
| ◆Uninterruptible Power Supplies(UPS) | ◆Power supplies for welding applications. |

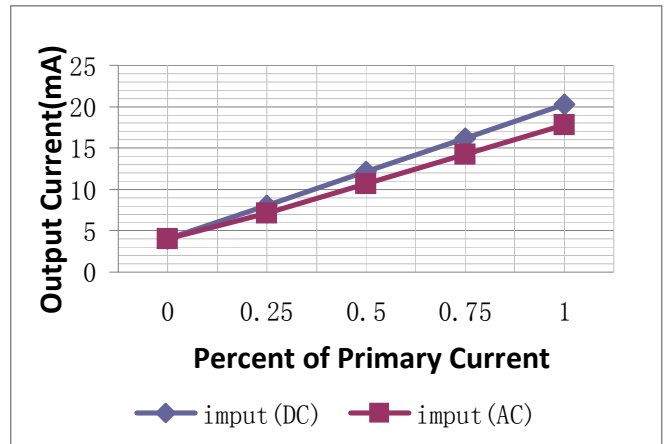
● Advantages

- | | |
|---|---|
| ◆Low insertion losses | ◆Only one design for wide current ratings range |
| ◆Easy to mount with automatic handling system | ◆High immunity to external interference |
| ◆Small size and space saving | |

● **Connection**

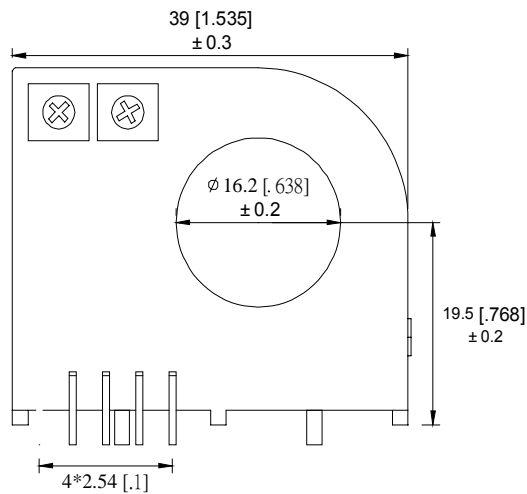


● **Output Curve Figure**

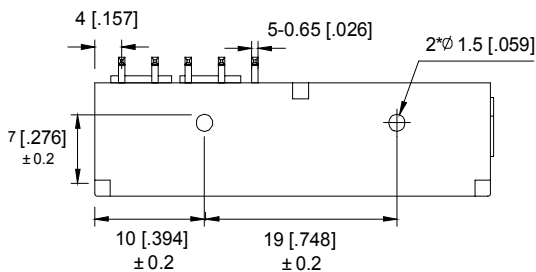
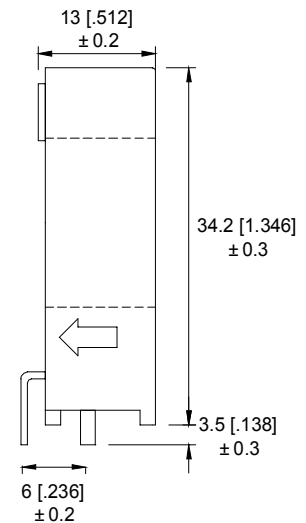


● **Dimensions (Unit:mm/inch)**

Front View



Right View



Bottom View

Secondary terminals

terminal 1	+15V
terminal 2	-15V
terminal 3	OUTPUT
terminal 4	GND