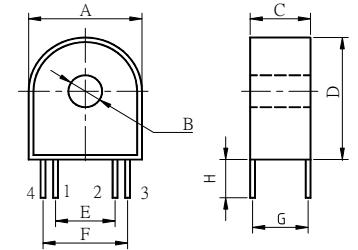


DC-Immune Current Transformers 50/60Hz



Electrical Characteristic

MECHANICAL DIMENSION

*Part Number	Primary Current range		Error Tolerances		Values at output				Dimensions (mm/inch)								DWG No.	
	I _R (A)	I _{max} (A)	I _{max} (A)	δ (°)	f (%)	R _L (Ω)	DCR (Ω)	L (mH)	V _{out} (V)	A	B	C	D	E	F	G		H
CT101250CP01	20	105	44	5.625	-0.50	37.5	89.3	4.15	0.3	<u>23.5</u> 0.925	<u>7</u> 0.276	<u>11</u> 0.433	<u>25</u> 0.984	<u>15.2</u> 0.598	<u>19</u> 0.748	<u>9.5</u> 0.374	<u>6.0</u> 0.236	
CT102250CL02	40	182	78	3.801	-1.2	18.8	82.5	2.96	0.3	<u>26</u> 1.024	<u>8.9</u> 0.350	<u>17</u> 0.669	<u>28</u> 1.102	<u>15.2</u> 0.598	<u>19.1</u> 0.752	<u>15.5</u> 0.610	<u>6.0</u> 0.236	
CT105250CP01	60	255	70	3.543	0.041	12.5	53.8	2.81	0.3	<u>31.5</u> 1.240	<u>9.2</u> 0.362	<u>14.4</u> 0.566	<u>31.6</u> 1.244	<u>20</u> 0.787	<u>24</u> 0.945	<u>10.3</u> 0.406	<u>6.0</u> 0.236	
CT103250CP01	100	325	116	3.33	0.425	7.5	48.6	2.97	0.3	<u>37.5</u> 1.476	<u>13.0</u> 0.512	<u>14</u> 0.551	<u>39</u> 1.535	<u>25.4</u> 1.000	<u>33</u> 1.299	<u>13</u> 0.512	<u>6.0</u> 0.236	
CT103250CL04	120	420	110	3.46	-0.416	6.25	34.7	2.0	0.3	<u>37.5</u> 1.476	<u>13.0</u> 0.512	<u>14</u> 0.551	<u>39</u> 1.535	<u>25.4</u> 1.000	<u>33</u> 1.299	<u>13</u> 0.512	<u>6.0</u> 0.236	

Frequency Range :50/60 Hz

Operating Temperature Range:-40°C to +85°C

Storage Temperature Range:-45°C to +90°C

Hi-POT: 4000VRMS/1min between windings.

This product for direct connection with DC-Immune in accordance with IEC 61036.



DC Current Transformer Nomination

CT 10 1 250 C P

CT =>The Current Transformer

10 =>The shape of refered CT-10

1 =>The size of refered CT10-1

250 =>N: Turns=digit shown *10(N_p :N_s :1:2500ts)

C =>The Terminal of Core

P => P(PINs), L (Lead Wires)

Definition: 1. f(%) : Ratio error.

2.δ(') : Phase shift.

3. I_o : Input current.

4.V_{out} : Output Voltage.

5.R_L : Loaded Resistances.

6.DCR : Sendary Winding DC Resistance.

7.I_{max} : Max. detecting current which remains lineality.

8.I_{max} : Max. half rectified DC amplitude w/o saturation for class-1-counters IEC 61036.IE., f(I_{max})<3%



E318452



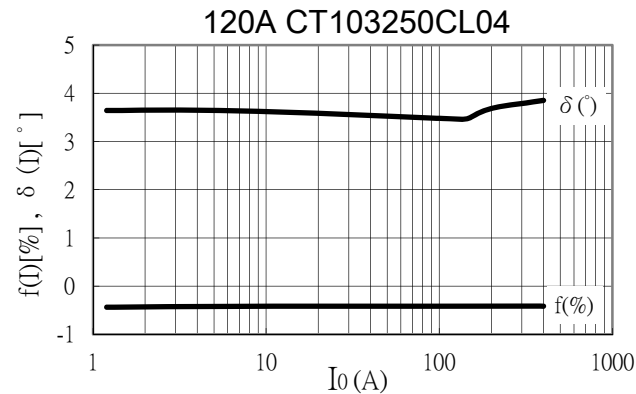
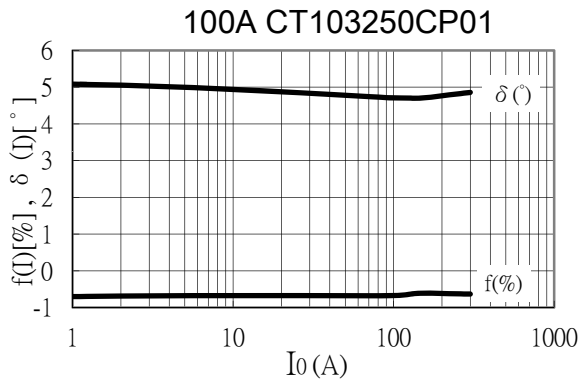
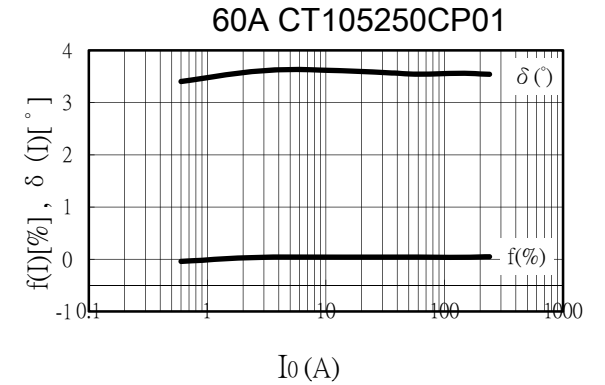
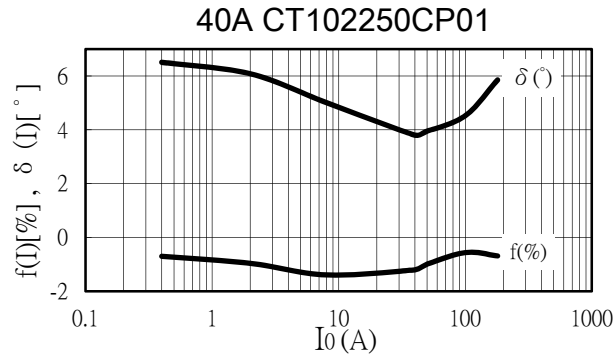
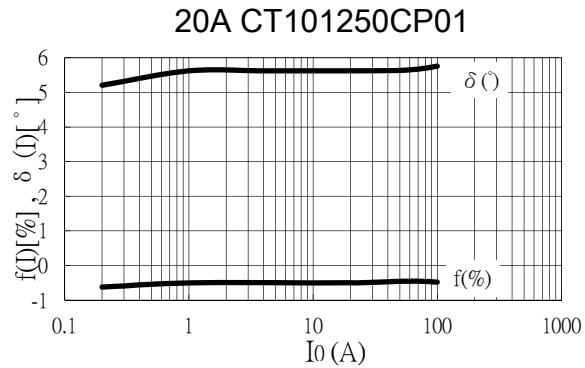
RoHS COMPLIANT

DC-Immune Current Transformers 50/60Hz

Application

Energy meter(kilowatt per hour).

Typical characteristics for Ratio error and Phase shift at room temperature



UL[®]
 C US
 E318452



RoHS COMPLIANT