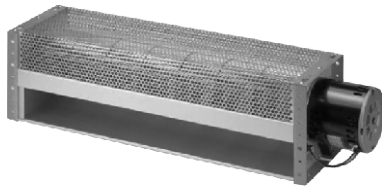


AFC 150

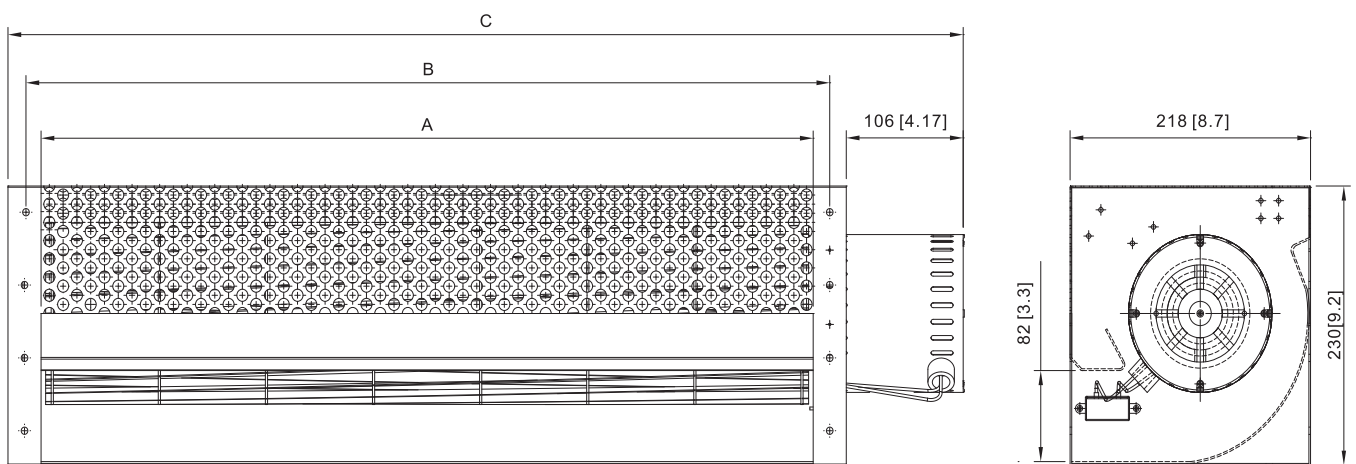


HOUSING
IMPELLER
BEARING
OPERATING VOLTAGE

DIELECTRIC STRENGTH
INSULATION
INSULATION RESISTANCE
OPERATING TEMPERATURE
SAFETY
ROHS COMPLIANCE
MOTOR TYPE

Metal / Aluminum
Aluminum, Ø150mm
Ball
85VAC to 125VAC for 115V Type
185VAC to 245VAC for 230V Type
1,500 VAC for 1 minute
Class A
10M Ohms Min. @500 VDC
0°C to +45°C
Thermally Protected
Yes
Capacitor Motor

DIMENSION



MODEL NO.	DIMENSION(mm)			WEIGHT (kg)
	A	B	C	
AFC150700V2H	700	730	866	13.6
AFC1501000V2H	1000	1030	1166	15.8

UNIT:mm[inch]

SPECIFICATION

MODEL NO.	RATED VOLTAGE (V)	FREQUENCY (Hz)	RATED CURRENT (A)	INPUT POWER (W)	SPEED (RPM)	MAX. AIR PRESSURE		MAX. AIR FLOW		NOISE dB(A) @ 1M
						inchH ₂ O	mmH ₂ O	CFM	m ³ /min	
AFC150700V2H	220	50/60	1.2/1.1	156/210	950/1150	0.20/0.28	5.0/7.2	1168/1274	33/36	59/63
AFC1501000V2H	220	50/60	1.3/1.3	190/265	900/1100	0.20/0.27	5.0/6.9	1593/1770	45/50	59/63

AIR PERFORMANCE

