

# AB

# 41146



411x146x86mm  
(16.2"x5.75"x3.39")

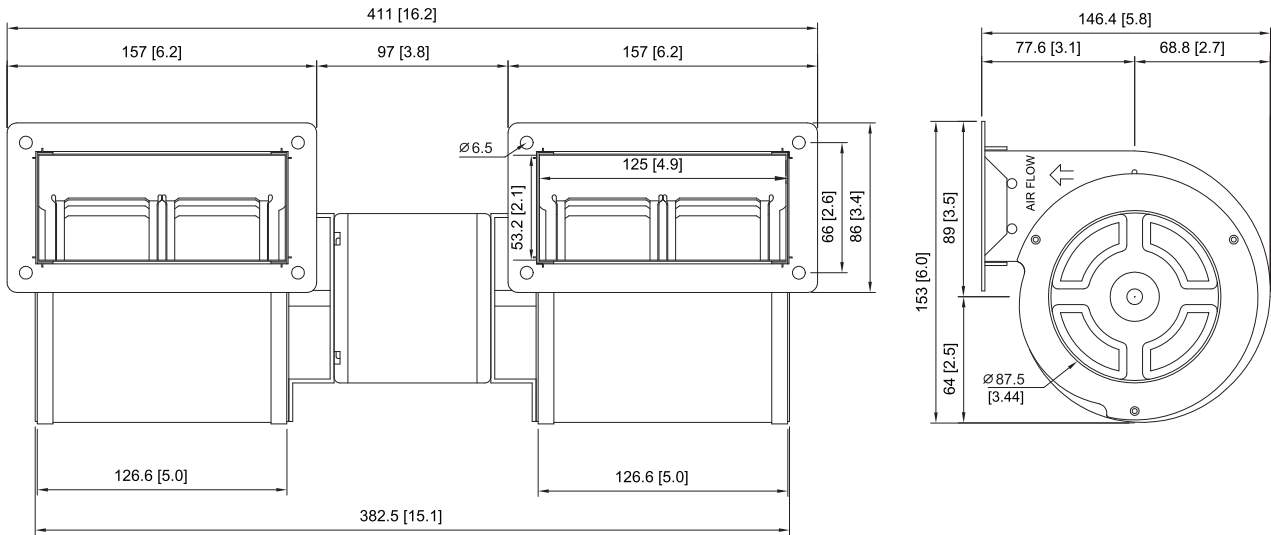


HOUSING	Steel
IMPELLER	Aluminum
BEARING	Ball
TERMINATION	Lead Wire
OPERATING TEMPERATURE	0°C to +55°C
INSULATION RESISTANCE	10M Ohms Min.@500VDC
DIELECTRIC STRENGTH	3mA Max. at 1500 VAC for 1 minute
WEIGHT	3.2KG
ROHS COMPLIANCE	YES
MOTOR TYPE	Shaded Pole Motor

# 411 mm

411mm

## DIMENSION

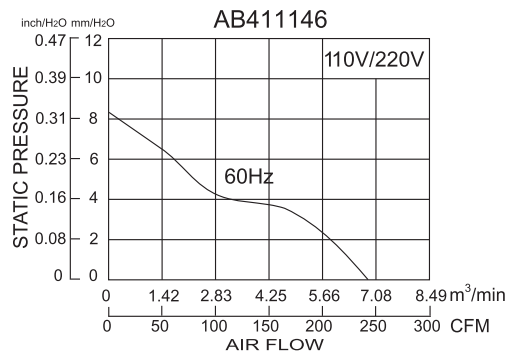


UNIT:mm[inch]

## SPECIFICATION

MODEL NO.	RATED VOLTAGE (V)	FREQUENCY (Hz)	RATED CURRENT (A)	INPUT POWER (W)	SPEED (RPM)	MAX. AIR PRESSURE inchH <sub>2</sub> O mmH <sub>2</sub> O	MAX.AIR FLOW CFM m <sup>3</sup> /min	NOISE dB(A)@ 1M
AB411146V1HBL	110	60	0.44	25	1655	0.33 8.3	240 6.86	
AB411146V2HBL	220	60	0.22	25	1655	0.33 8.3	240 6.86	

## AIR PERFORMANCE



Sirocco Fan Blower