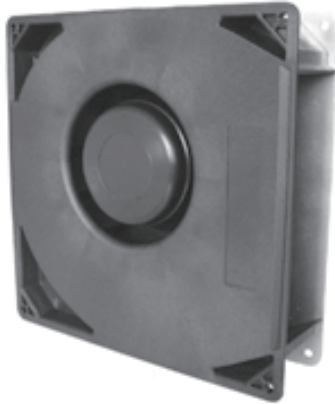


# AB 22056

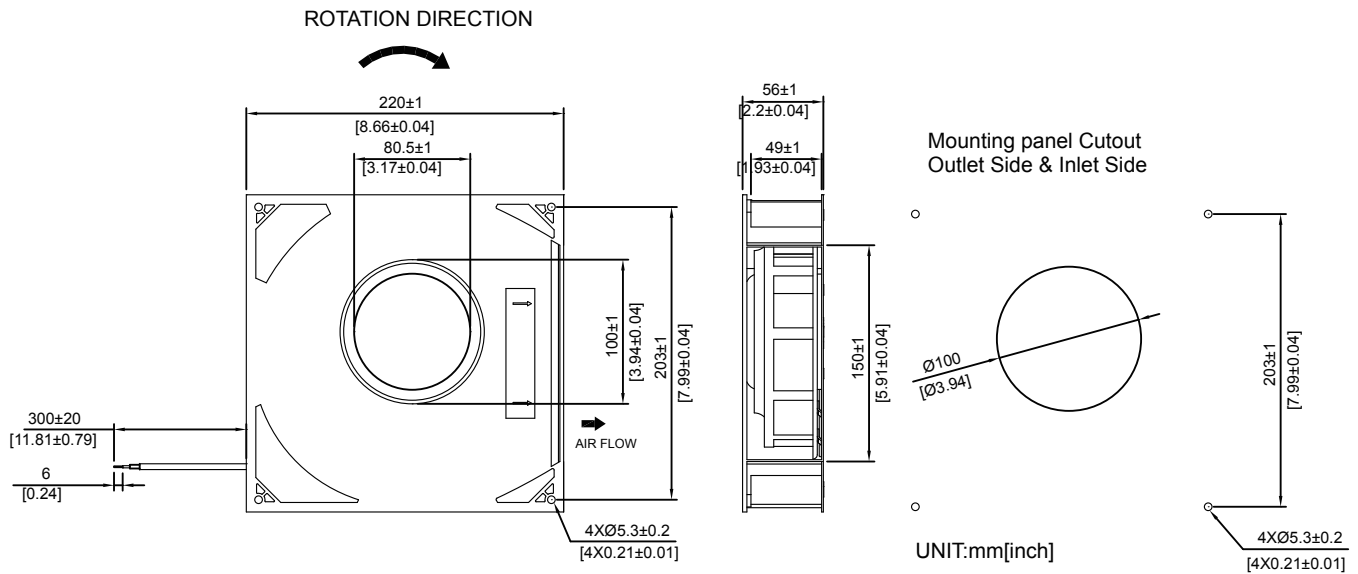


220x220x56mm  
(8.66"x8.66"x2.2")



- |                                |   |
|--------------------------------|---|
| <b>HOUSING</b>                 | Spiral Housing of Fiberglass-Reinforced Polycarbonate Housing<br>Base of Galvanized Steel Plate |
| <b>IMPELLER</b>                | Fiberglass-Reinforced Polycarbonate   |
| <b>BEARING</b>                 | Ball or Sleeve  |
| <b>MOTOR TYPE</b>              | AC Induction Capacitor Motor  |
| <b>TERMINATION</b>             | Lead wire   |
| <b>OPERATING VOLTAGE RANGE</b> | 85VAC to 125VAC for 115V Type<br>185VAC to 245VAC for 230V Type                                 |
| <b>DIELECTRIC STRENGTH</b>     | 1,500VAC for 1 second   |
| <b>INSULATION</b>              | Class A   |
| <b>INSULATION RESISTANCE</b>   | 10M Ohms Min. @500 VDC  |
| <b>OPERATING TEMPERATURE</b>   | -10°C to + 70°C for Ball Type   |
| <b>SAFETY</b>                  | Thermally Protected   |
| <b>WEIGHT</b>                  | 1750g   |
| <b>ROHS COMPLIANCE</b>         | Yes   |

## DIMENSION



## SPECIFICATION

MODEL NO.	RATED VOLTAGE (V)	FREQUENCY (Hz)	RATED CURRENT (A)	INPUT POWER (W)	SPEED (RPM)	MAX. AIR PRESSURE		MAX. AIR FLOW		NOISE dB(A) @1M
						inchH <sub>2</sub> O	mmH <sub>2</sub> O	CFM	m <sup>3</sup> /min	
AB22056V1HBL	115	50/60	0.34/0.42	37/45	2900/3300	1.34/1.87	34.03/47.50	103/117	2.92/3.32	64/66
AB22056V2HBL	230	50/60	0.16/0.20	36/44	2900/3300	1.34/1.87	34.03/47.50	102.4/125	2.9/3.54	64/66

## AIR PERFORMANCE

