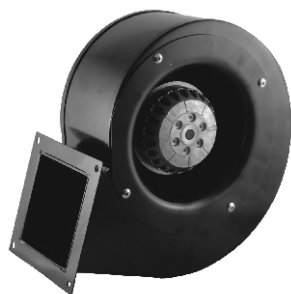


ACB208120 Single Inlet Blower



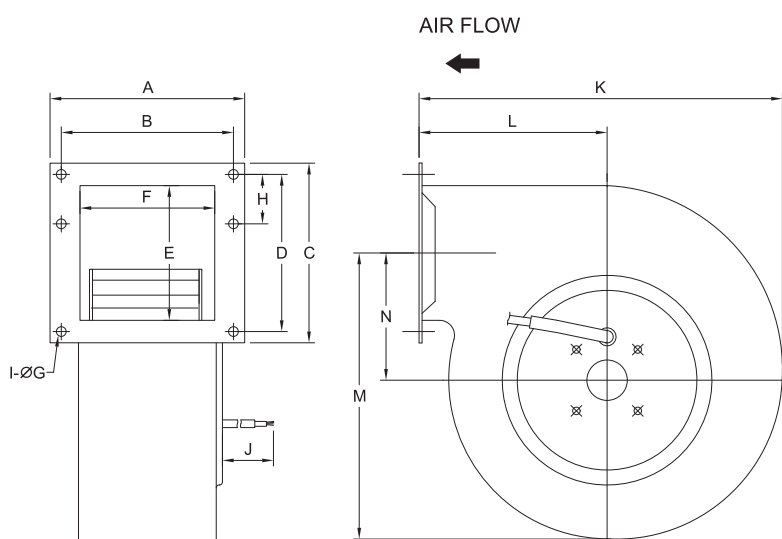
208x120mm, 2 Poles
(8.18"x4.72")



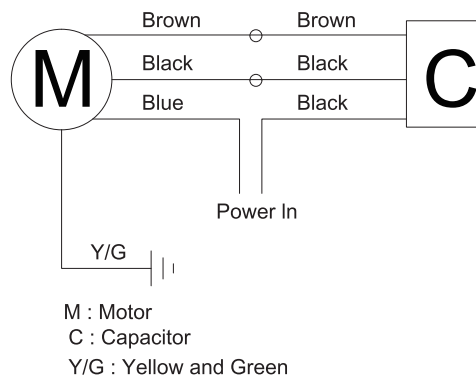
MOTOR	Outer rotor motor $\varnothing 92\text{mm}$
HOUSING	Steel Painted Black Scroll
IMPELLER	Steel
BEARING	Ball
INSULATION	Class F
INSULATION RESISTANCE	$0^\circ\text{C} \sim +65^\circ\text{C}$
OPERATING TEMPERATURE	10M Ohms Min. @500VDC
DIELECTRIC STRENGTH	5mA Max.at 1500 VAC for 1 minute
SAFETY	Thermally Protected
WEIGHT	1.9kg
ROHS COMPLIANCE	YES

208 mm

DIMENSION



WIRE DIAGRAM



MODEL NO.	DIMENSION(mm)													WEIGHT (Kg)
	A	B	C	D	E	F	G	I	J	K	L	M	N	
ACB208120-2P	120	100	110	90	86	78	6.5	4	560	208	102	166	77	1.9

UNIT:mm

SPECIFICATION

MODEL NO.	RATED VOLTAGE (V)	FREQUENCY (Hz)	RATED CURRENT (A)	INPUT POWER(W)	SPEED (RPM)	MAX. AIR PRESSURE		MAX. AIR FLOW		NOISE dB(A)@1M	CAPACITOR uf/Vac
						inchHzO	mmHzO	CFM	m ³ /min		
ACB208120V1H2P	110	60	1.00	110	2010	1.28	32.64	197	5.58	64	12/250
ACB208120V2H2P	220	50/60	0.41/0.50	90/110	2010/2080	0.98/1.28	24.89/32.43	200/197	5.67/5.58	63/64	3/450

AIR PERFORMANCE

