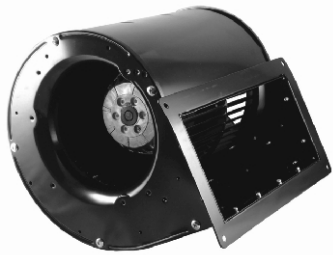


ACB 238180 Double Inlet Blower



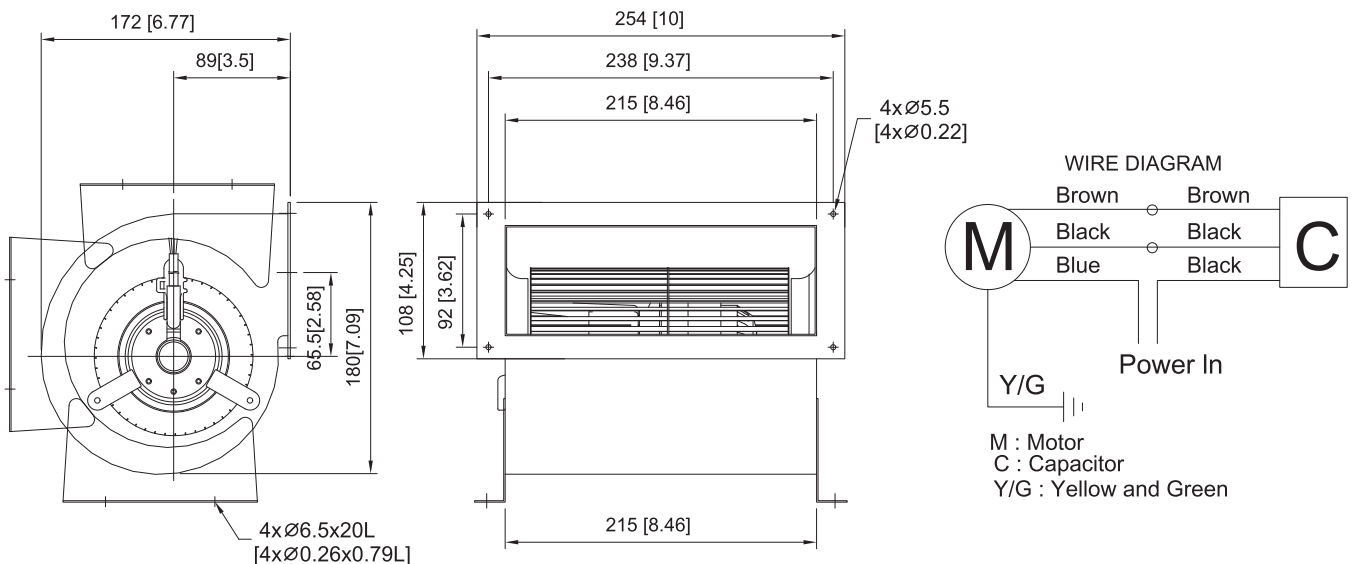
238mmx180mm, 2 Poles & 4 Poles
(9.37"x7.08")



MOTOR	Outer rotor motor $\varnothing 92\text{mm}$
HOUSING	Steel Painted Black Scroll
IMPELLER	Steel
BEARING	Ball
INSULATION	Class F
INSULATION RESISTANCE	0°C to 65°C
OPERATING TEMPERATURE	10M Ohms Min. @500VDC
DIELECTRIC STRENGTH	5mA Max. at 500 VAC for 1 minute
SAFETY	Thermally Protected
WEIGHT	4.2kg
ROHS COMPLIANCE	YES

238 mm

DIMENSION



UNIT:mm[inch]

SPECIFICATION

MODEL NO.	RATED VOLTAGE(V)	FREQUENCY (Hz)	RATED CURRENT(A)	INPUT POWER(W)	SPEED (RPM)	MAX. AIR PRESSURE		MAX. AIR FLOW		NOISE dB(A)@1M	CAPACITOR $\mu\text{F}/\text{Vac}$
						inchH ₂ O	mmH ₂ O	CFM	m ³ /min		
ACB238180V1H2P	110	60	1.52	165	1290	1.16	29.58	342	9.67	56	20/250
ACB238180V2H2P	220	50/60	0.69/0.76	150/165	1440/1290	1.12/1.16	28.56/29.58	359/342	10.17/9.67	59/56	5/50
ACB238180V2H4P	220	50/60	0.30/0.37	65/80	1170/1200	0.38/0.46	9.69/11.73	315/324	8.29/9.17	55/56	2/450

AIR PERFORMANCE

