

254mm

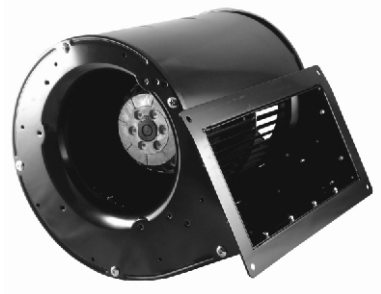
ACB254238

Double Inlet Blower

CE

254mmx238mm,4 Poles

(10"x9.37")



- MOTOR

IMPELLER

BEARING

INSULATION

INSULATION RESISTANCE

OPERATING TEMPERATURE

DIELECTRIC STRENGTH

SAFETY

ROHS COMPLIANCE
- Outer roter moter $\varnothing 92\text{mm}$

Metal

Ball

Class F

0 °C to 65 °C

10M Ohms Min. @500VDC

5mA Max.at 500 VAC for 1 minute

Thermally Protected

YES

254mm

DIMENSION

