

ACF 17555



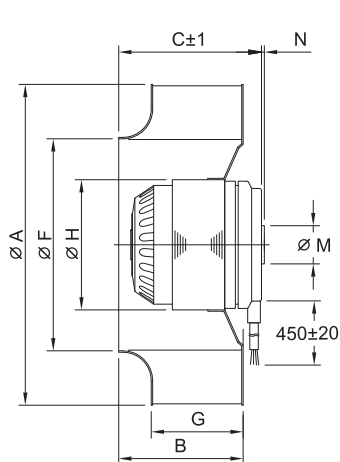
Ø175x55mm, 2 Poles
(Ø6.89"x2.17")



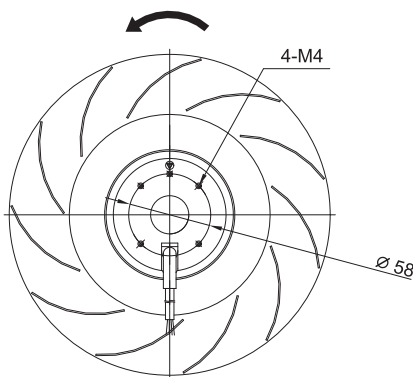
MOTOR	Outer rotor motor Ø92mm
IMPELLER	Metal
BEARING	Ball
TERMINATION	Lead Wire
DIELECTRIC STRENGTH	5mA Max. at 1500 VAC for 1 minute
INSULATION	Class F
INSULATION RESISTANCE	10M Ohms Min. @500VDC
OPERATING TEMPERATURE	0 °C ~ + 65 °C
SAFETY	Thermally Protected
WEIGHT	1.0kg
ROHS COMPLIANCE	YES

175 mm

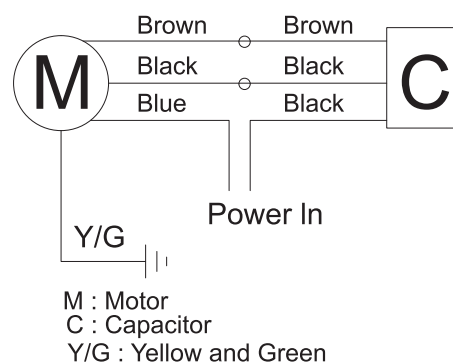
DIMENSION



ROTATION DIRECTION



WIRE DIAGRAM



MODEL NO.	DIMENSION(mm)								WEIGHT (Kg)
	A	B	C	F	G	H	M	N	
ACF17555-2P	175	47	55	132	32	92	27	2	1.0

UNIT:mm

SPECIFICATION

MODEL NO.	RATED VOLTAGE (V)	FREQUENCY (Hz)	RATED CURRENT (A)	INPUT POWER(W)	SPEED (RPM)	MAX. AIR PRESSURE		MAX. AIR FLOW		NOISE dB(A)@1M	CAPACITOR uF/Vac
						inchH ₂ O	mmH ₂ O	CFM	m ³ /min		
ACF17555V1H2P	110	60	0.62	70	2650	1.12	28.5	253	7.16	58	8/250
ACF17555V2H2P	220	50/60	0.27/0.31	60/70	2550/2650	1.00/1.12	25.5/28.5	241/253	2.36/2.48	56/58	2/450

AIR PERFORMANCE

