

ACF19070-HL



Ø190x70mm
(Ø7.5"x2.75")

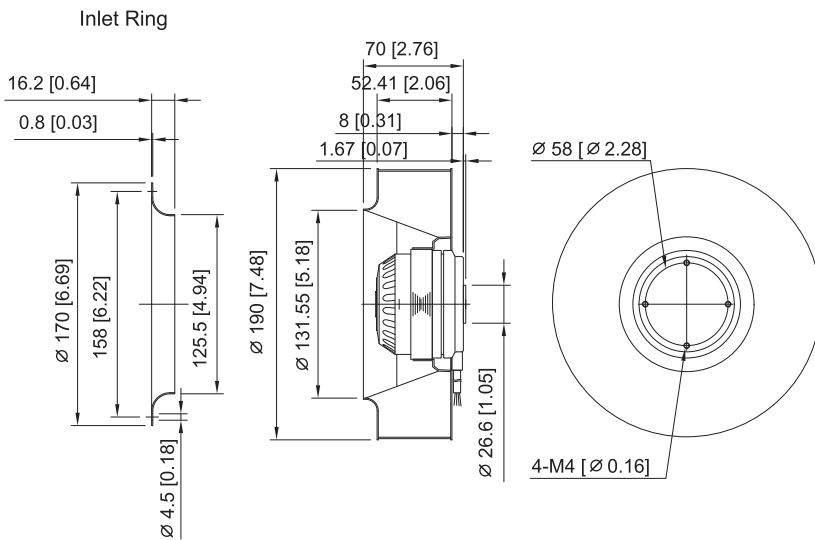


MOTOR
IMPELLER
BEARING
TERMINATION
DIELECTRIC STRENGTH
INSULATION
INSULATION RESISTANCE
OPERATING TEMPERATURE
SAFETY
WEIGHT
ROHS COMPLIANCE

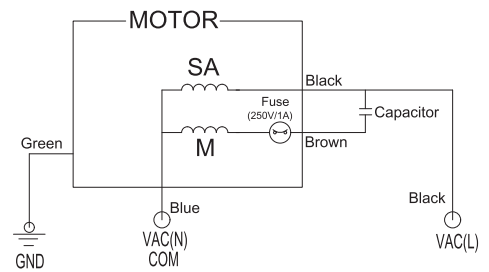
Outer rotor motor Ø92mm
Plastic
Ball
Lead Wire
5mA Max.at 1500 VAC for 1 minute
Class F
10M Ohms Min. @500VDC
0 °C ~ +65 °C
Thermally Protected
1.2kg
YES

190 mm

DIMENSION



ACF19070-HL Wiring Diagram



UNIT:mm[inch]

SPECIFICATION

MODEL NO.	RATED VOLTAGE (V)	FREQUENCY (Hz)	RATED CURRENT (A)	INPUT POWER (W)	SPEED (RPM)	MAX. AIR PRESSURE inchH ₂ O mmH ₂ O	MAX. AIR FLOW CFM m ³ /min	NOISE dB(A)@1M
ACF19070V1HBL-HL	115	60	0.61	70	2700	1.52 38.7	368 10.4	54
ACF19070V2HBL-HL	230	50/60	0.26/0.34	56/65	2470/2570	1.1/1.3 28/34	335/353 9.4/9.9	54

AIR PERFORMANCE

