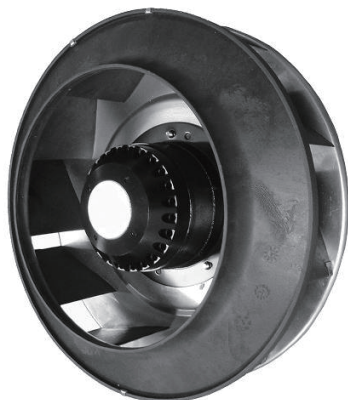


ACF305110-HL

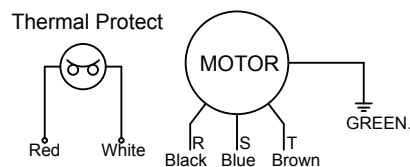
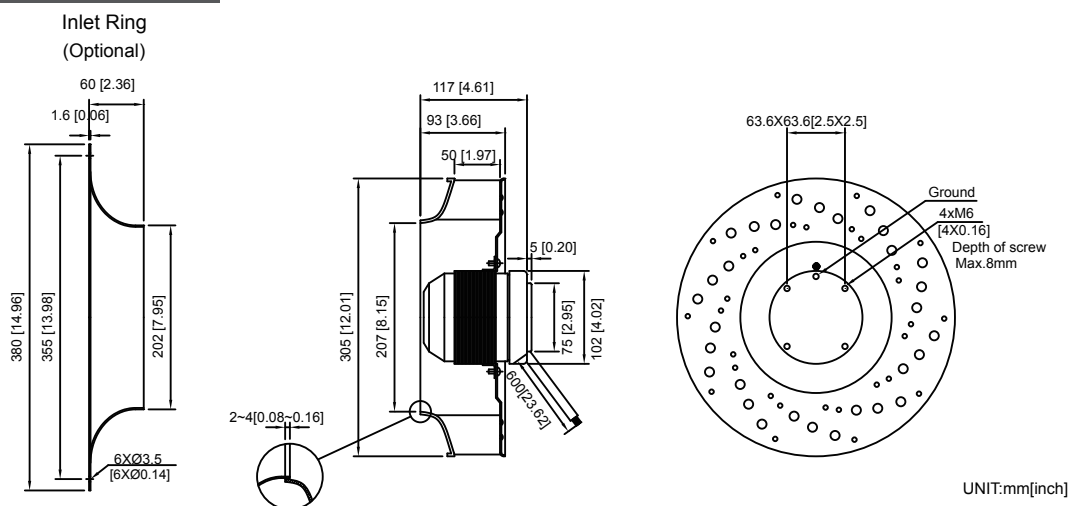


Ø305x110mm 3-Phase, 4 Poles
(Ø12"x4.33")



HOUSING	Outer rotor motor Ø102mm
IMPELLER	Plastic Impeller, Metal Plate
BEARING	Ball
TERMINATION	Lead Wire
DIELECTRIC STRENGTH	5mA Max. at 1500VAC for 1 minute
INSULATION	Class A
INSULATION RESISTANCE	10M Ohms Min. @500VDC
OPERATING TEMPERATURE	0°C to +65°C
SAFETY	Thermally Protected
WEIGHT	7kg
ROHS COMPLIANCE	Yes

DIMENSION



SPECIFICATION

MODEL NO.	RATED VOLTAGE (V)	FREQUENCY (Hz)	RATED CURRENT (A)	INPUT POWER (W)	SPEED (RPM)	MAX. AIR PRESSURE inchH ₂ O mmH ₂ O	MAX. AIR FLOW CFM m ³ /min	NOISE dB(A) @1M
ACF305110V2H4PT-HL	220	50/60	0.7	174	1390/1600	1.09 28	917 26.00	54

AIR PERFORMANCE

