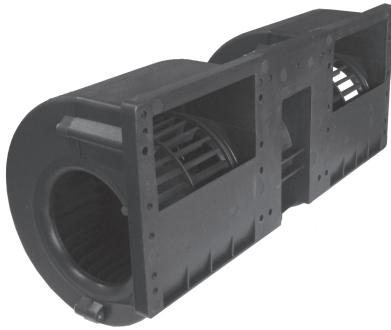


DCB 351140

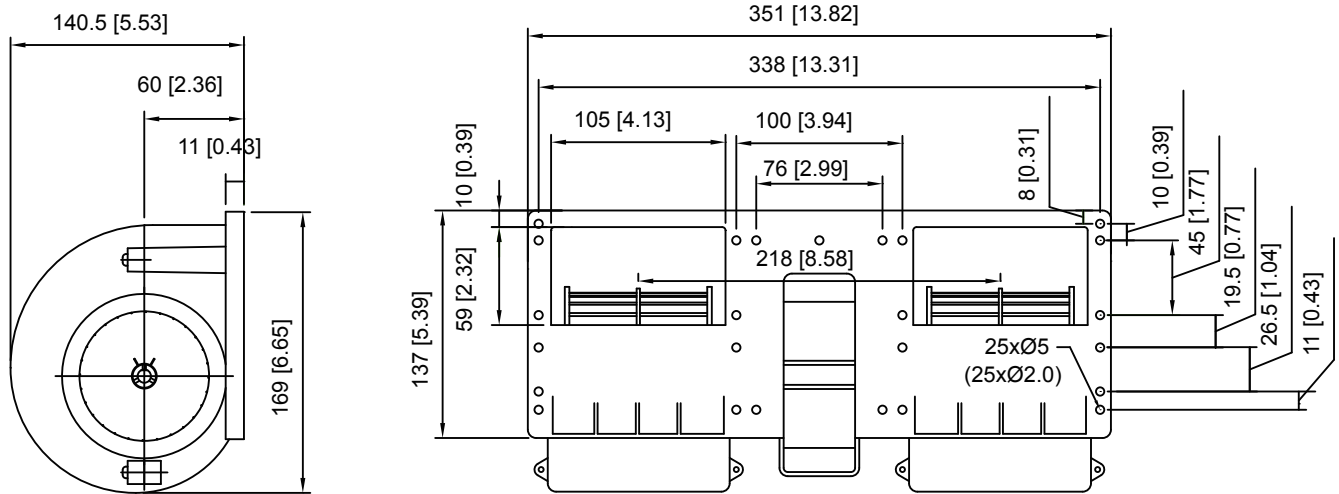


351x180x137mm
(13.81"x5.51"x5.39")



HOUSING Plastic
 IMPELLER Plastic
 BEARING Ball
 INSULATION Class A
 OPERATING TEMPERATURE -20°C to +40°C
 INSULATION RESISTANCE 10M Ohms Min. @500 VDC
 DIELECTRIC STRENGTH 5mA Max. at 500VAC for 1 minue
 WEIGHT 2.5kg
 ROHS COMPLIANCE Yes

DIMENSION



UNIT:mm[inch]

SPECIFICATION

MODEL NO.	RATED VOLTAGE (V)	RATED CURRENT (A)	INPUT POWER (W)	SPEED (RPM)	MAX. AIR PRESSURE		MAX. AIR FLOW		NOISE dB(A) @1M
					inchH ₂ O	mmH ₂ O	CFM	m ³ /min	
DCB351140V24H	24	11.5	276	4050	2.9	73.7	618	17.5	71
DCB351140V12H	12	11.5	138	3000			442	12.5	65

AIR PERFORMANCE

