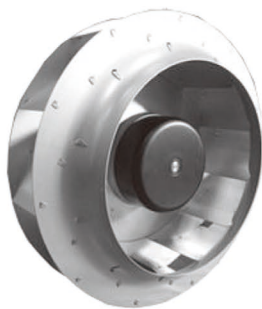


# ECF 280165



Ø 280x165mm  
(Ø 11.02"x6.5")

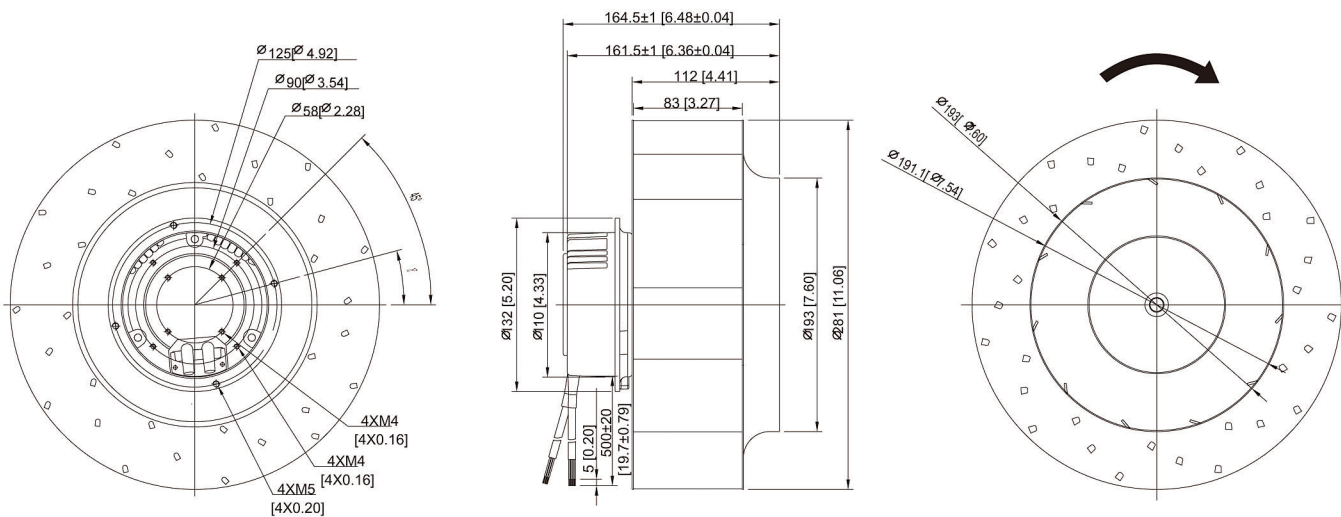


MOTOR  
IMPELLER  
BEARING  
INSULATION  
OPERATING TEMPERATURE  
INSULATION RESISTANCE  
DIELECTRIC STRENGTH  
WEIGHT  
ROHS COMPLIANCE

Outer roter moter Ø92mm  
Metal  
Ball  
Class A  
-20 °C to +60 °C  
10M Ohms Min. @500VDC  
5mA Max.at 500 VAC for 1 minute  
3.8 kg  
YES

# 280 mm

## DIMENSION



UNIT:mm[inch]

## SPECIFICATION

MODEL NO.	RATED VOLTAGE(V)	FREQUENCY (Hz)	RATED CURRENT (A)	INPUT POWER(W)	SPEED (RPM)	MAX. AIR PRESSURE inchH <sub>2</sub> O    mmH <sub>2</sub> O	MAX. AIR FLOW CFM    m <sup>3</sup> /min	NOISE dB(A)@1M
ECF280165V2HB	230	50	1.0	145	1900	1.90    48.1	1060    30.01	76

## AIR PERFORMANCE

