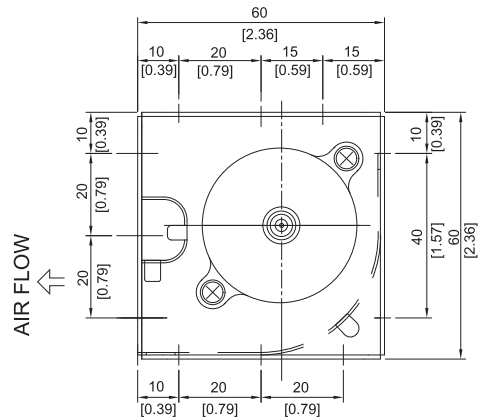
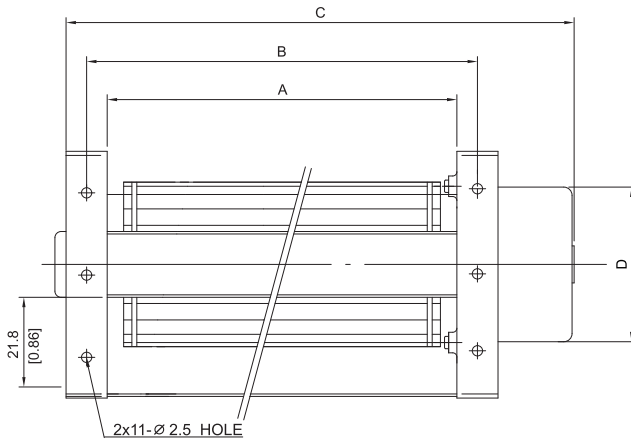


DF 40



HOUSING Metal / Aluminum
IMPELLER Aluminum, Ø40 mm
BEARING Ball
OPERATING TEMPERATURE 0°C to + 45°C
INSULATION RESISTANCE 10M Ohms Min. @500 VDC
DIELECTRIC STRENGTH 5mA Max.at 500VAC for 1 minute
ROHS COMPLIANCE Yes
MOTOR TYPE DC Brushless Motor

DIMENSION



MODEL NO.	DIMENSION(mm)				WEIGHT (g)
	A	B	C	D	
DF40098	98	108	144	31	220
DF40160	160	170	206	31	260
DF40198	198	208	246	38	310
DF40300	300	310	348	38	410
DF40360	360	370	416	50	570

UNIT:mm[inch]

SPECIFICATION

MODEL NO.	RATED VOLTAGE (V)	RATED CURRENT (A)	INPUT POWER (W)	SPEED (RPM)	MAX. AIR PRESSURE		MAX. AIR FLOW		NOISE dB(A)@ 1M
					inchH ₂ O	mmH ₂ O	CFM	m ³ /min	
DF40098V12H	12	0.20	2.40	3000	0.11	2.9	24	0.7	33
DF40098V24H	24	0.15	3.60	3000	0.11	2.9	24	0.7	33
DF40160V12H	12	0.25	3.00	2600	0.10	2.6	35	1.0	31
DF40160V24H	24	0.20	0.48	2600	0.10	2.6	35	1.0	31
DF40198V12H	12	0.30	3.60	2500	0.10	2.5	49	1.4	33
DF40198V24H	24	0.20	4.60	2500	0.10	2.5	49	1.4	33
DF40300V12H	12	0.40	4.80	2300	0.08	2.0	74	2.1	33
DF40300V24H	24	0.20	1.80	2300	0.08	2.0	74	2.1	33
DF40360V12H	12	0.60	7.20	2600	0.08	2.1	106	3.0	42
DF40360V24H	24	0.40	9.60	2600	0.08	2.1	106	3.0	42

AIR PERFORMANCE

