

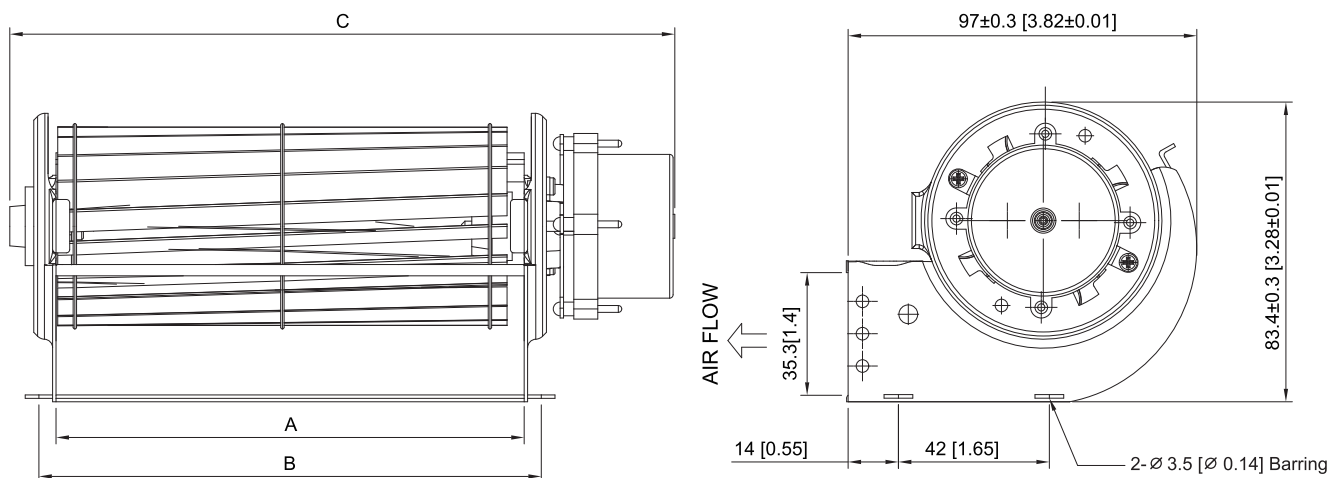
# DFG 60



HOUSING  
IMPELLER  
BEARING  
OPERATING TEMPERATURE  
INSULATION RESISTANCE  
DIELECTRIC STRENGTH  
ROHS COMPLIANCE  
MOTOR TYPE

Metal / Aluminum  
Aluminum, Ø60 mm  
Ball  
0°C to + 45°C  
10M Ohms Min. @500 VDC  
5mA Max. at 500VAC for 1 minute  
Yes  
DC Brushless Motor

## DIMENSION



AC / DC Cross Flow Fan

MODEL NO.	DIMENSION(mm)			WEIGHT (g)
	A	B	C	
DFG60120	120	130	185	520
DFG60180	180	190	245	610
DFG60240	240	250	305	690
DFG60300	300	310	365	780
DFG60360	360	370	425	860

UNIT:mm[inch]

## SPECIFICATION

MODEL NO.	RATED VOLTAGE (V)	RATED CURRENT (A)	INPUT POWER (W)	SPEED (RPM)	MAX. AIR PRESSURE		MAX. AIR FLOW		NOISE dB(A)@ 1M
					inchH <sub>2</sub> O	mmH <sub>2</sub> O	CFM	m <sup>3</sup> /min	
DFG60120V12H	12	0.65	7.8	2500	0.25	6.3	71	2.0	49
DFG60120V24H	24	0.40	9.6	2500	0.25	6.3	71	2.0	49
DFG60180V12H	12	0.95	11.4	2200	0.23	5.9	99	2.8	50
DFG60180V24H	24	0.50	12.0	2200	0.11	5.9	99	2.8	50
DFG60240V12H	12	0.50	6.0	1600	0.11	2.8	102	2.9	42
DFG60240V24H	24	0.25	6.0	1600	0.10	2.8	102	2.9	42
DFG60300V12H	12	0.60	7.2	1500	0.10	2.6	124	3.5	43
DFG60300V24H	24	0.30	7.2	1500	0.10	2.6	124	3.5	43
DFG60360V12H	12	0.65	7.8	1400	0.10	2.5	149	4.2	42
DFG60360V24H	24	0.35	8.4	1400	0.10	2.5	149	4.2	42

## AIR PERFORMANCE

