

D4028D-CT



40x40x28mm
(1.57"x1.57"x1.1")



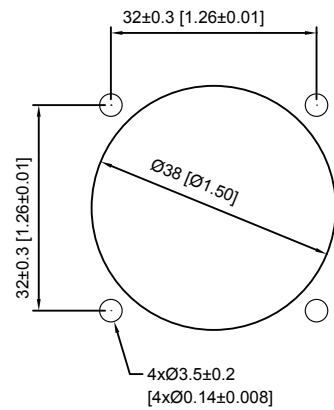
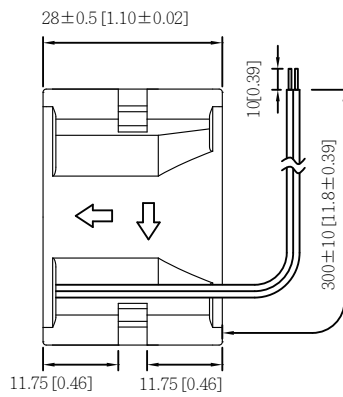
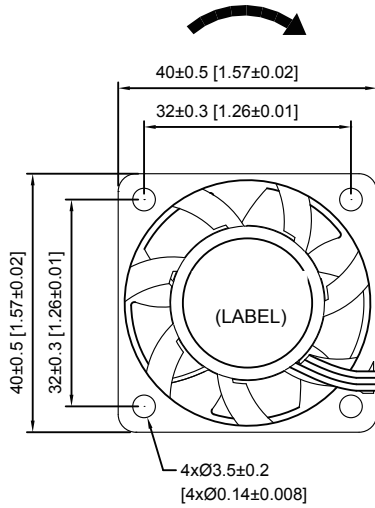
HOUSING	Thermoplastic PBT, UL94V-0
IMPELLER	Thermoplastic PBT, UL94V-0
BEARING	Ball
OPERATING TEMPERATURE	-10°C to + 70°C
INSULATION RESISTANCE	10M Ohms Min. @500VDC
DIELECTRIC STRENGTH	5mA Max. at 500VAC 60Hz for 1 second
WEIGHT	30g
ROHS COMPLIANCE	Yes

DIMENSION

ROTATION DIRECTION

AIR FLOW

Mounting Panel Cutout
Outlet Side & Inlet Side



UNIT:mm[inch]

SPECIFICATION

MODEL NO.	RATED VOLTAGE (V)	RATED CURRENT (A)	INPUT POWER (W)	SPEED (RPM)	MAX. AIR PRESSURE		MAX. AIR FLOW		NOISE dB(A) @1M
					inchH ₂ O	mmH ₂ O	CFM	m ³ /min	
D4028V12SHBD-CT	12	1.7	20.4	26000	3.940	100.08	37.14	1.05	67.5
D4028V12SMBD-CT	12	1.0	12.0	21000	2.364	60.00	30.00	0.85	62.0

AIR PERFORMANCE

