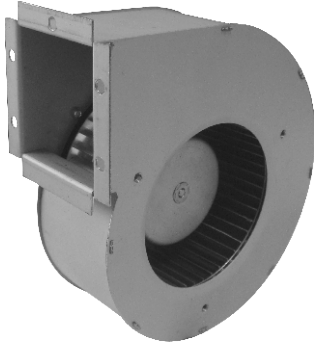


DB15468-K



154x138x68mm
(6.06"x5.43"x2.68")



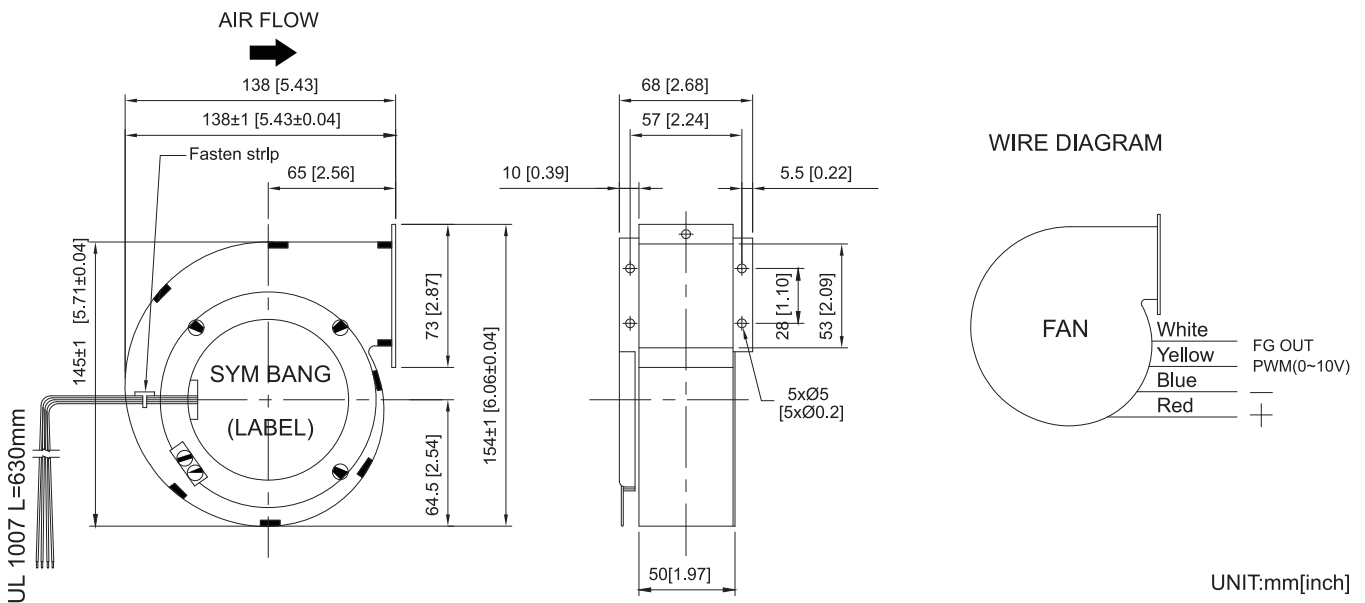
HOUSING	Electroplate steel sheet
IMPELLER	Aluminum sheet
BEARING	Ball
OPERATING TEMPERATURE	-10°C to +60°C
INSULATION RESISTANCE	10M Ohms Min. @500 VDC
DIELECTRIC STRENGTH	5 mA Max. at 500 VAC 60Hz for 1 minute
WEIGHT	820g
ROHS COMPLIANCE	Yes

154mm

154mm

DC Fans & Blowers

DIMENSION



SPECIFICATION

MODEL NO.	RATED VOLTAGE (V)	RATED CURRENT (A)	INPUT POWER (W)	SPEED (RPM)	MAX. AIR PRESSURE		MAX. AIR FLOW		NOISE dB(A) @1M
					inchH ₂ O	mmH ₂ O	CFM	m ³ /min	
DB15468V12HB-K	12	1.20	14.4	4000	2.67	67.7	92.5	2.61	57
DB15468V12MB-K	12	1.60	19.2	2800	1.38	35.1	72.0	2.03	46
DB15468V24MB-K	24	1.00	24.0	2800	1.38	35.1	72.0	2.03	46
DB15468V48MB-K	48	0.50	24.0	2800	1.38	35.1	72.0	2.03	46

AIR PERFORMANCE

