

## MS1608HC SERIES ~ High Current Ceramic Chip Inductors

### FEATURES :

- High current ratings - up to 2.4 Amps
- Will handle transient currents up to 50% higher.
- Inductance values from 1.6 to 24 nH
- Lead Free with RoHS Compliant .



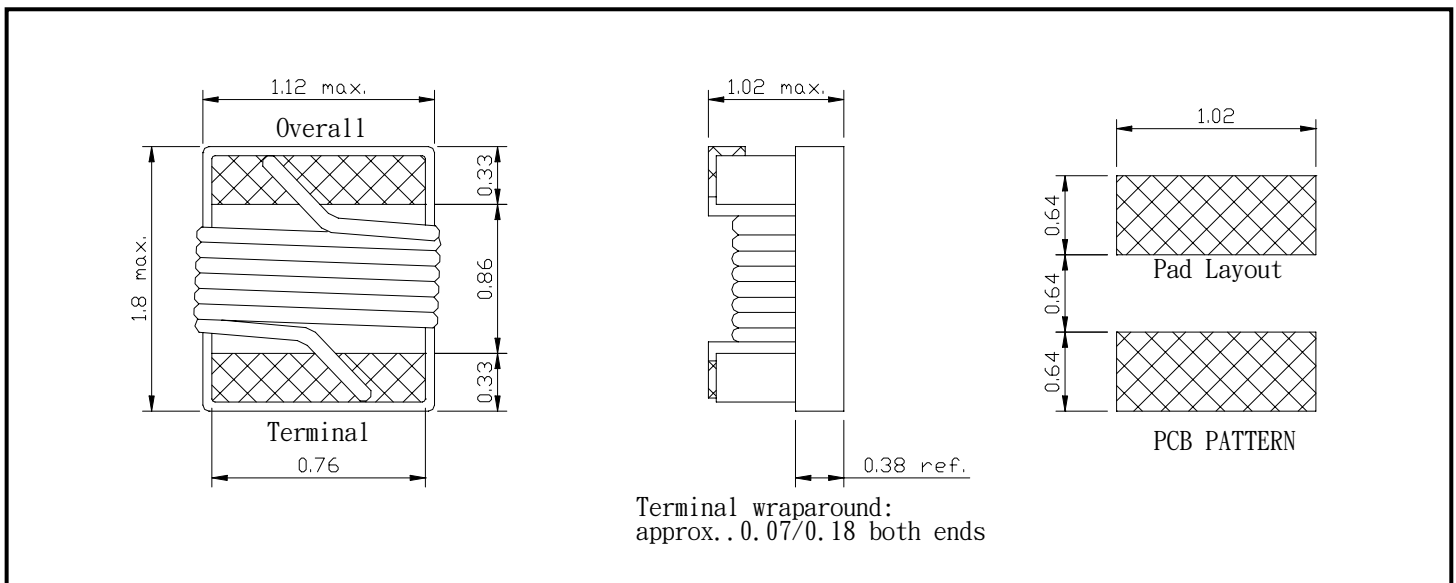
RoHS Compliant

### PART NUMBERING SYSTEM

<u>MS</u>	<u>1 6 0 8 HC</u>	—	<u>1 0 N J</u>	—	<u>LF</u>
TYPE	DIMENSIONS		INDUCTANCE		LEAD FREE

### SHAPES AND DIMENSIONS

UNIT : mm



## MS1608HC SERIES ~

### High Current Ceramic Chip Inductors



RoHS Compliant

#### SPECIFICATION TABLE

PART NUMBER	INDUCTANCE (nH)	TOLERANCE	Q. MIN.	SRF (MHz) MIN.	DCR ( $\Omega$ ) (max)	IDC (A) (max)
MS1608HC-1N6X-LF	1.6@250MHz	B,S	24@900MHz	12500	0.030	2.40
MS1608HC-3N6X-LF	3.6@250MHz	B,S	24@900MHz	5900	0.048	2.30
MS1608HC-3N9X-LF	3.9@250MHz	B,S	25@900MHz	5900	0.054	2.20
MS1608HC-6N8X-LF	6.8@250MHz	B,S	35@900MHz	5800	0.054	2.10
MS1608HC-7N5X-LF	7.5@250MHz	B,S	38@900MHz	3700	0.059	2.10
MS1608HC-10NX-LF	10@250MHz	G,J,K	38@900MHz	3700	0.071	2.00
MS1608HC-11NX-LF	11@250MHz	G,J,K	38@900MHz	3000	0.075	2.00
MS1608HC-12NX-LF	12@250MHz	G,J,K	38@900MHz	2800	0.080	1.90
MS1608HC-15NX-LF	15@250MHz	G,J,K	40@900MHz	2800	0.099	1.90
MS1608HC-18NX-LF	18@250MHz	G,J,K	42@900MHz	2400	0.099	1.80
MS1608HC-24NX-LF	24@250MHz	G,J,K	42@900MHz	2400	0.105	1.80

INDUTANCE TOLERANCE : B= $\pm$ 0.2nH, S= $\pm$ 0.3nH, G= $\pm$ 2%, J= $\pm$ 5%, K= $\pm$ 10%

TEST EQUIPMENT: Inductance measured using an Agilent/HP 4286A impedance analyzer .

Operating temperature range -40°C to +125°C.

Electrical specifications at 25°C.

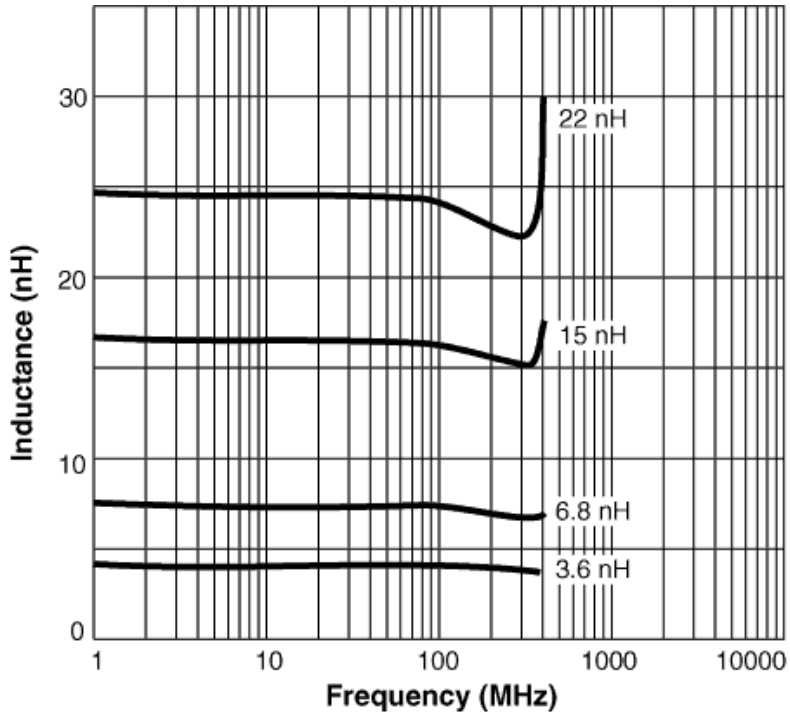
## MS1608HC SERIES ~ High Current Ceramic Chip Inductors

### TYPICAL ELECTRICAL CHARACTERISTICS

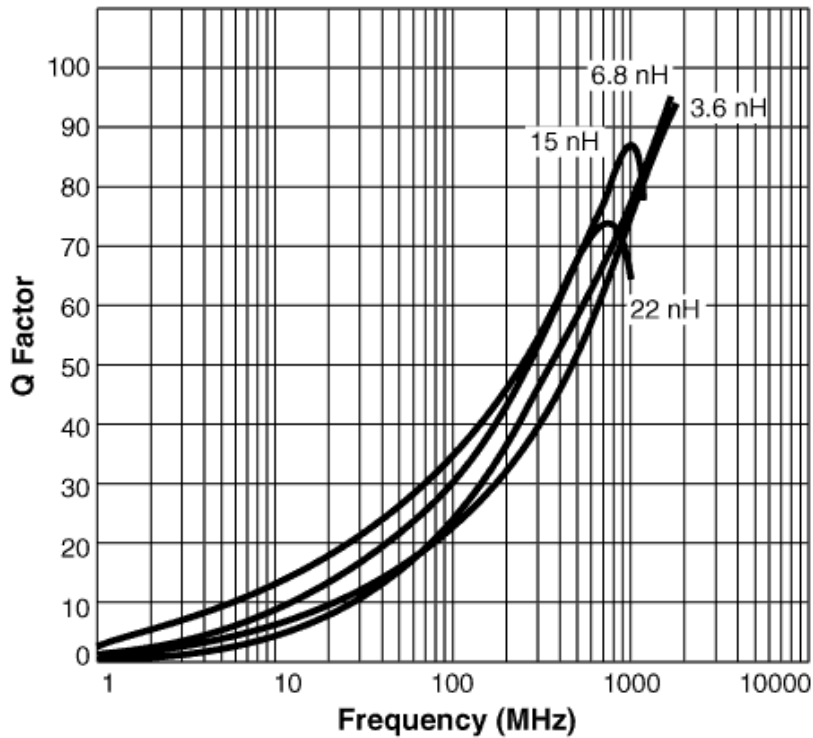
#### INDUCTANCE vs. FREQUENCY CHARACTERISTICS



RoHS Compliant



#### Q vs. FREQUENCY CHARACTERISTICS

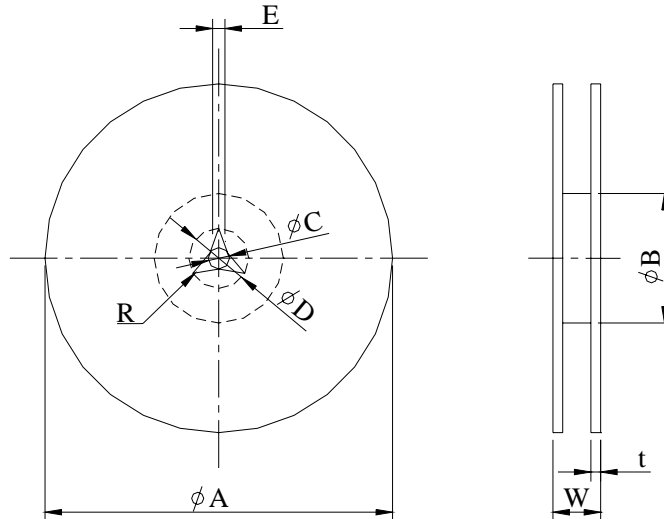


## MS1608HC SERIES ~ High Current Ceramic Chip Inductors

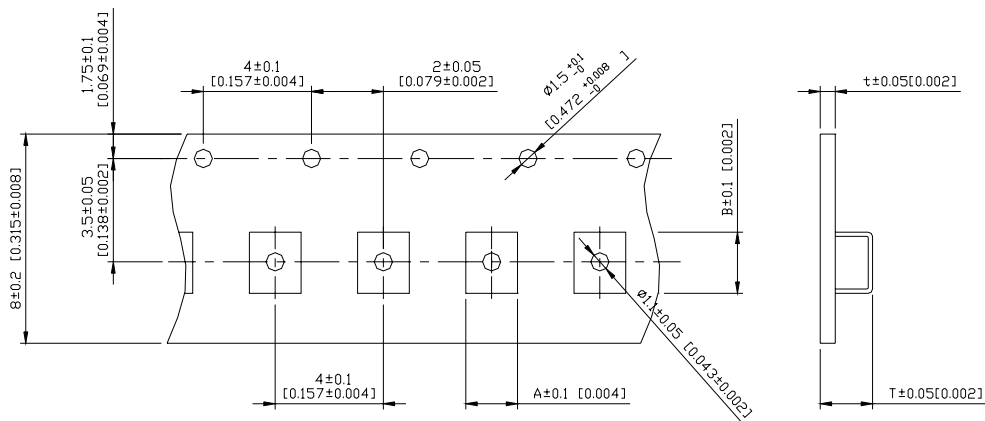
### PACKAGING SPECIFICATION



RoHS Compliant



	A	B	C	D	E	W8	W12	t	R
<b>T(<math>\phi</math> 178mm) Reel</b>	$\phi$ 178 $\pm$ 2	$\phi$ 60 $\pm$ 1	$\phi$ 13 $\pm$ 0.8	$\phi$ 21 $\pm$ 0.8	2	10 $\pm$ 1.5	14.5 $\pm$ 1.5	1.27 $\pm$ 0.2	1
<b>T(<math>\phi</math> 330mm) Reel</b>	$\phi$ 330 $\pm$ 2	$\phi$ 100 $\pm$ 2	$\phi$ 13 $\pm$ 0.8	$\phi$ 21 $\pm$ 0.8	2	10 $\pm$ 1.5	14.5 $\pm$ 1.5	1.27 $\pm$ 0.2	1



TYPE	A	B	T	t	T( $\phi$ 178mm)	T( $\phi$ 330mm)
<b>MS1608HC</b>	1.10	1.90	1.10	0.2	3000 pcs/reel	-