

Surface Mount 10Base-T Interface Transformers

PART NUMBERING SYSTEM

S16 — **88025** — **LF**
 TYPE DIMENSIONS LEAD FREE

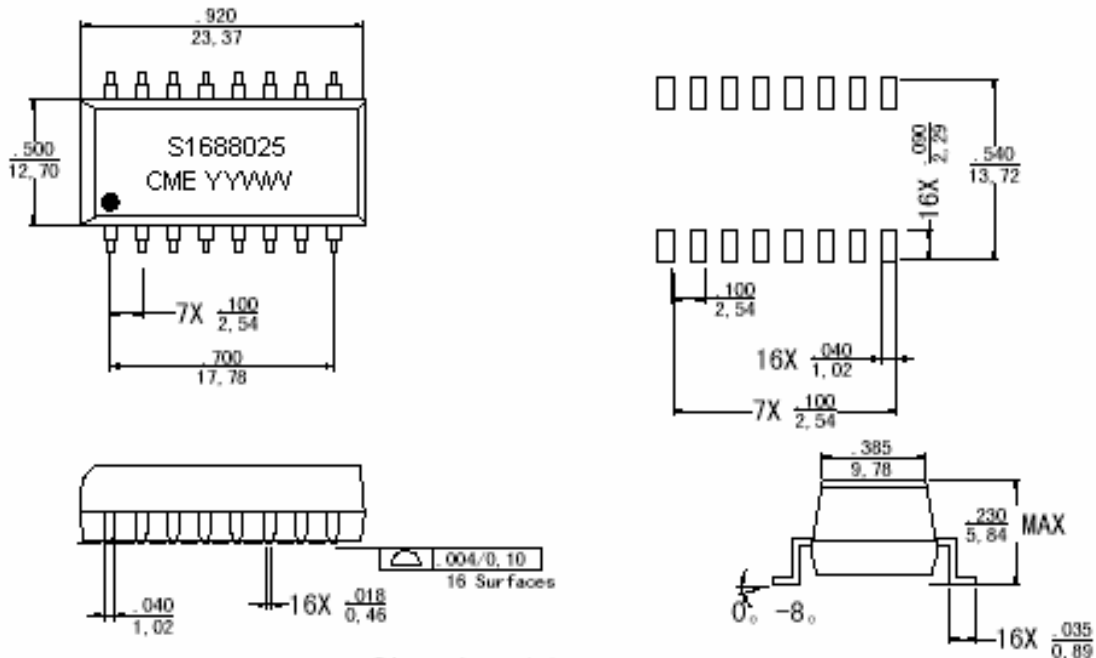


FEATURES

- Fully integrated for Adaptor , Hub, and Motherboard applications
- Add Suffix LF for RoHS compliant
- **RoHS compliant peak solder rating 235°C**

SHAPES AND DIMENSIONS

Mechanicals



Dimensions: Inches

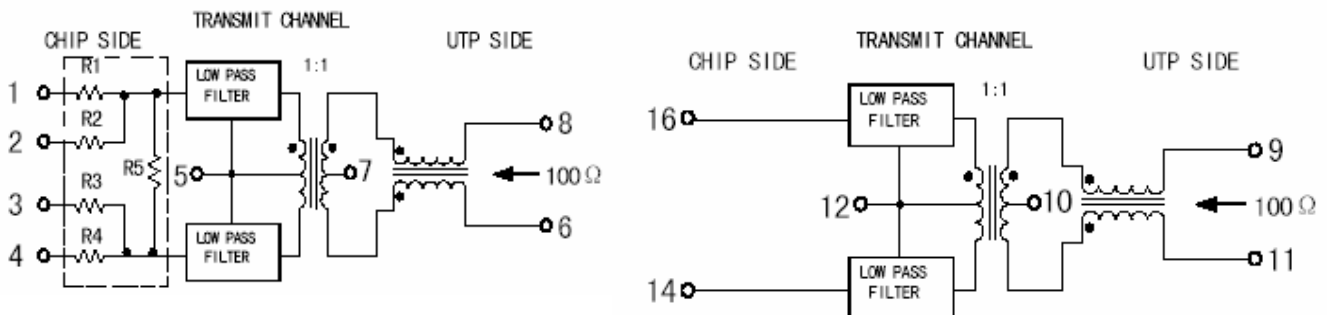
Unless otherwise specified, all tolerances are $\pm .010$
 $0, 25$

Surface Mount 10Base-T Interface Transformers

Resistor Values (ohm)

| Part Number | IC Manufacturer | R1 | R2 | R3 | R4 | R5 | R6 | R7 |
|--------------|-----------------|-------------|-------------|-------------|-------------|-------|------------|------------|
| S16-88025-LF | AMD | TXD(+)=61.9 | TXP(+)=422 | TXD(-)=61.9 | TXP(-)=422 | 1.2K | RX(+)=49.9 | RX(-)=49.9 |
| S16-88026-LF | Various | N/A | N/A | N/A | N/A | N/A | N/A | N/A |
| S16-88027-LF | National | TXO(-)=274 | TXO(+)=66.5 | TXO(-)=66.5 | TXOD(+)=274 | 806.0 | RX(+)=49.9 | RX(-)=49.9 |

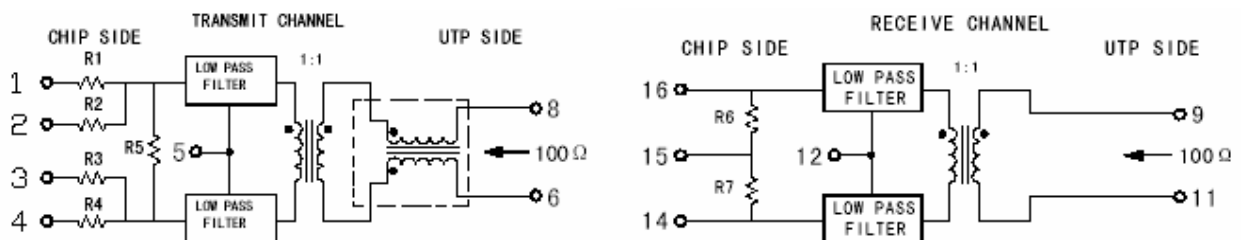
S16-88025, S16-88026-LF , S16-88027-LF



Resistor Values (ohm)

| Part Number | IC Manufacturer | R1 | R2 | R3 | R4 | R5 | R6 | R7 |
|-------------|-----------------|-------|-------|------|-------|--------|------|------|
| S16-2001-LF | National | 348.0 | 53.6 | 53.6 | 348.0 | 806.0 | 49.9 | 49.9 |
| S16-2003-LF | AMD | 61.9 | 422.0 | 61.9 | 422.0 | 1210.0 | 49.9 | 49.9 |
| S16-2007-LF | Motorola | 39.0 | N/A | 39.0 | N/A | N/A | 49.9 | 49.9 |

S16-2001-LF , S16-2003-LF , S16-2007-LF



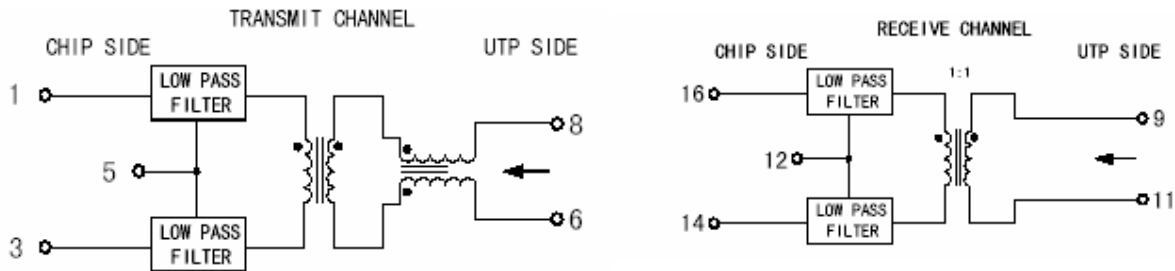
10/100Base-T Singel Port Transformers



RoHS Compliant

Schematics

S16-1117-LF , S16-1178-LF



Note : The S16-88056-LF is designed for use with most transceivers requiring a turns ratio of 1:1 on transmit.

The S16-2009-LF is designed for use with DEC and most other transceivers requiring a turns ratio of 1:1.414 on transmit.

ELECTRICAL CHARACTERISTICS @ 25°C --- Operating Temperature 0°C to 70°C

| PART NUMBER | Insertion Loss (dB Min) | Attenuation (XMIT) (dB Min) | | | Return loss 5 to 10MHz (dB Min) | | Crosstalk (dB Min) | Common Mode Rejection (XMIT) (dB Min) | | | | | Hipot (Vrms Min) |
|--------------|-------------------------|-----------------------------|-------|--------|---------------------------------|--------|--------------------|---------------------------------------|------|-------|-------|--------|------------------|
| | | 30MHz | 40MHz | 100MHz | 100Ω | 98±13Ω | | 5-10MHz | 5MHz | 10MHz | 50MHz | 100MHz | |
| S16-88025-LF | -6.0 | -35 | -35 | -35 | -18 | -15 | -35 | -60 | -60 | -55 | -50 | -45 | 1500 |
| S16-88026-LF | -1.0 | -30 | -35 | -35 | -18 | -15 | -35 | -60 | -60 | -55 | -50 | -45 | 1500 |
| S16-88027-LF | -6.5 | -35 | -35 | -35 | -18 | -15 | -35 | -60 | -60 | -55 | -50 | -45 | 1500 |
| S16-88056-LF | -1.0 | -30 | -27 | -27 | -18 | -15 | -30 | -40 | -30 | -50 | -45 | -- | 1500 |
| S16-2001-LF | -5.5 | -30 | -30 | -35 | -18 | -15 | -30 | -35 | -30 | -55 | -50 | -- | 1500 |
| S16-2003-LF | -5.0 | -30 | -27 | -27 | -18 | -18 | -35 | -40 | -35 | -45 | -30 | -- | 1500 |
| S16-12007-LF | -5.0 | -30 | -35 | -40 | -18 | -15 | -25 | -35 | -30 | -55 | -50 | -- | 1500 |
| S16-2009-LF | -1.0 | -30 | -27 | -27 | -18 | -15 | -35 | -40 | -35 | -45 | -45 | -- | 1500 |