

# 10/100 Base - TX1x4Port Transformer Modules



RoHS Compliant

## PART NUMBERING SYSTEM

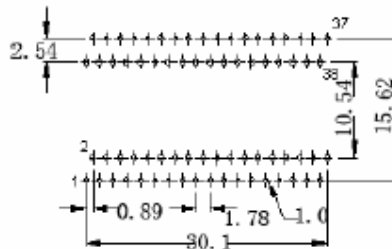
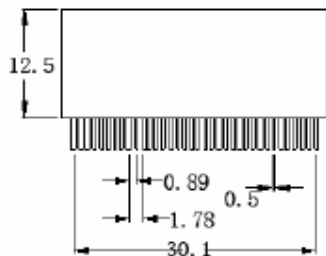
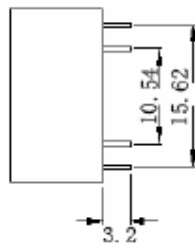
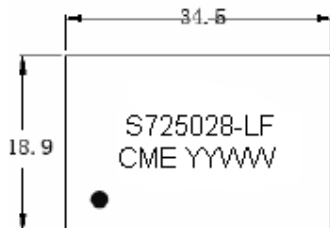
**S72** — **5028** — **LF**  
 TYPE — DIMENSIONS — LEAD FREE

## FEATURES

- With various turns ratios
- Meets all IEEE standards including 350uH OCL with 8mA bias
- For RoHS parts add suffix LF
- RoHS compliant peak solder rating 235°C

## SHAPES AND DIMENSIONS

### Mechanicals



Dimensions:  $\frac{\text{Inches}}{\text{mm}}$  Unless otherwise specified, all tolerances are  $\pm$

# 10/100 Base - TX1x4Port Transformer Modules

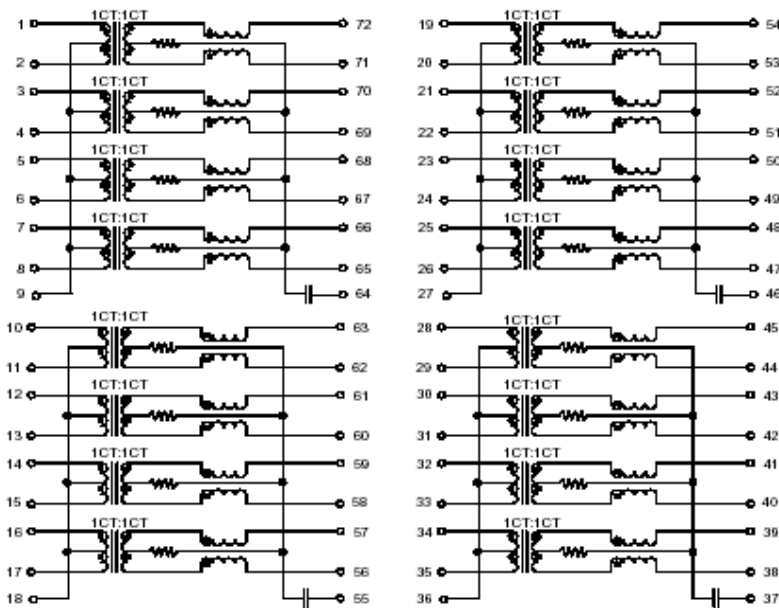


RoHS Compliant

## FEATURES

- Designed to support 1:1 turns ratio transceivers
- Meets IEEE 802.3 specification
- Designed for long haul Gigabit Ethernet (10/100/1000Base-T) applications
- S24-5008-LF designed to fit behind 1x1 RJ45 connector
- Cable interface for isolation and low common mode emissions
- RoHS compliant peak solder rating 235°C

## Schematics : S72-5028-LF



## ELECTRICAL CHARACTERISTICS @ 25°C --- Operating Temperature 0°C to 70°C

PART NUMBER	Insertion Loss (dB Max)	Turns Ratio (±5%)	DCR Max. (Ω)	Pri inductance (1KHz/0.1V @8mA) Min.	Pri inductance (1MHz/0.1V) Max.	Return loss (dB Min) MHz			Crosstalk (dB Min) MHz			Hipot (Vrms/0.5mA)
	0.1-100MHz					1-30	40-50	60-80	30	60	100	
S72-5028-LF	-1.0	1CT:1CT	0.9	350uH	0.5uH	-18	-14.2	-12.0	-40	-37.5	-33	1500