

## UU10.5LF SERIES ~ Common Mode Choke



RoHS Compliant

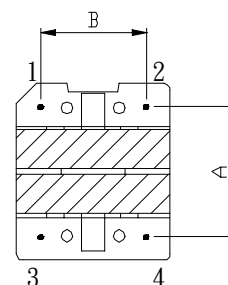
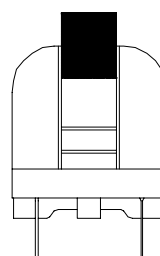
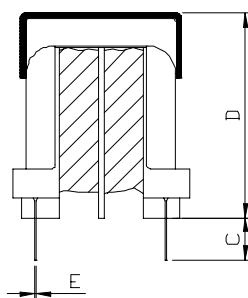
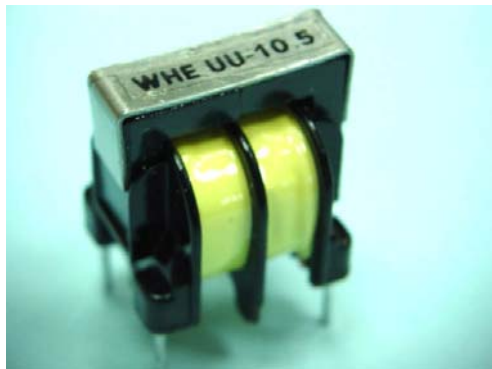
### AC Line Filters

#### PART NUMBERING SYSTEM

<u>UU</u>	<u>10.5LF</u>	—	<u>1 5 2</u>	—	<u>LF</u>
TYPE	DIMENSIONS		IMPEDANCE		LEAD FREE

#### SHAPES AND DIMENSIONS

UNIT : mm



**A=13±0.5 B=10±0.5 C=4±0.5 D=20 max. E=0.7±0.1**

#### DESCRIPTION

- Through-Hole off-line common mode inductors .
- Inductance range from 1.5mH to 43 mH .
- Provide significant attenuation of common noise across a broad range of frequencies . .
- UU10.5 families are low cost, high efficiency choke coil designed to virtually eliminate line conducted common mode noise .

#### APPLICATIONS

- Off-line power supplies.
- Protects AC input from effects of switching regulators .
- DC - DC Converters .
- Computer , TV , VCR , audio and office equipment . .

## UU10.5LF SERIES ~ Common Mode Choke



RoHS Compliant

### AC Line Filters

#### ELECTRICAL CHARACTERISTICS :

PART NUMBER	Common Mode Inductance ( mH )	RATED CURRENT ( A )	RATED VOLTAGE ( V )	INSULATION RESISTANCE ( M ohm )
UU10.5LF-152-LF	1.50 min.	2.0	300	100min.
UU10.5LF-182-LF	1.80 min.	1.7	300	100min.
UU10.5LF-222-LF	2.20min.	1.5	300	100min.
UU10.5LF-302-LF	3.00min.	1.3	300	100min.
UU10.5LF-352-LF	3.50 min.	1.2	300	100min.
UU10.5LF-552-LF	5.50 min.	1.0	300	100min.
UU10.5LF-742-LF	7.40 min.	0.8	300	100min.
UU10.5LF-103-LF	10.0 min.	0.7	300	100min.
UU10.5LF-123-LF	12.0 min.	0.6	300	100min.
UU10.5LF-203-LF	20.0 min.	0.5	300	100min.
UU10.5LF-303-LF	30.0 min.	0.4	300	100min.
UU10.5LF-433-LF	43.0 min.	0.3	300	100min.

- 1) Operating Temperature Range : -40°C to + 85 °C range is application specific.
- 2) Winding Temperature Rise (at Rated Current) : 60K max.
- 3) Packaging : Supplied in bulk packaging.