

## SDC2D09C SERIES

### Low Profile Shielded Power Inductors



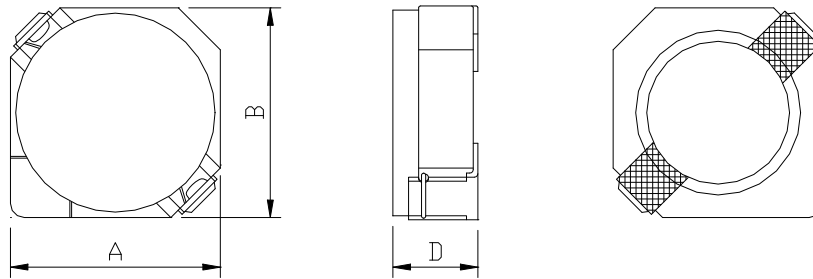
RoHS Compliant

#### PART NUMBERING SYSTEM

<b>SDC</b>	<b>2D09C</b>	<b>—</b>	<b>1R2N</b>	<b>—</b>	<b>LF</b>
TYPE	DIMENSIONS		INDUCTANCE		LEAD FREE

#### SHAPES AND DIMENSIONS

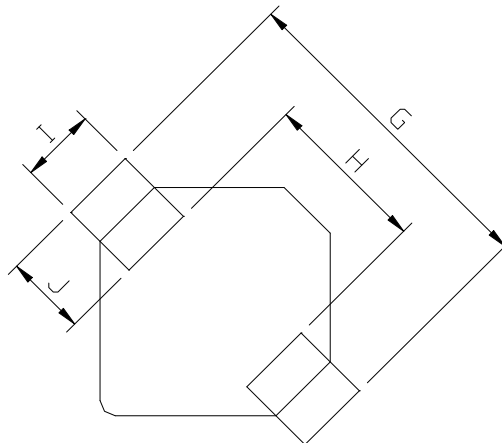
UNIT : mm



**A=3.20 max. B=3.20 max. D=1.0 max.**

#### RECOMMENDED PATTERNS

UNIT : mm



**G= 4.3 H= 1.7 I= 1.3 J= 1.3**

#### FEATURES

- Low profile ( 3.2mm Max. square and 1.0mm Max. height )
- Magnetically shielded construction with lead free .
- Ideal for DC-DC converter choke coil for portable equipment ( DVD, DSC , cellular , PDA )



RoHS Compliant

## Low Profile Shielded Power Inductors

### ELECTRICAL CHARACTERISTICS :

PART NUMBER	INDUCTANCE ( $\mu$ H)	DCR (m $\Omega$ ) (Max.)	Isat ( mA )	Irms ( mA )	Stamp
SDC2D09C-1R2N-LF	1.2 $\pm$ 30%	78.0	830	1550	A
SDC2D09C-1R5N-LF	1.5 $\pm$ 30%	88.0	700	1350	B
SDC2D09C-2R4N-LF	1.8 $\pm$ 30%	119.0	580	1100	C
SDC2D09C-3R3N-LF	3.3 $\pm$ 30%	174.0	500	900	D
SDC2D09C-4R7N-LF	4.7 $\pm$ 30%	209.0	420	840	E
SDC2D09C-6R4N-LF	3.3 $\pm$ 30%	290.0	360	650	F
SDC2D09C-8R2N-LF	8.2 $\pm$ 30%	360.0	3200	600	G
SDC2D09C-100P-LF	10 $\pm$ 25%	500.0	300	510	H
SDC2D09C-120P-LF	12 $\pm$ 25%	550.0	270	450	I
SDC2D09C-150P-LF	15 $\pm$ 25%	650.0	240	420	J
SDC2D09C-180P-LF	18 $\pm$ 25%	770.0	220	380	K
SDC2D09C-220P-LF	22 $\pm$ 25%	940.0	200	350	L
SDC2D09C-270P-LF	27 $\pm$ 25%	1110.0	160	320	M

- Inductance tested at 100 kHz, 1 Vrms, 0 Adc using an Agilent/HP 4263B LCR meter or equivalent.
- Isat : DC current at which the inductance drops 20% (typ) from its value without current.
- Irms: The actual current when temperature of coil become  $\Delta$ 40°C . ( Ta=+25°C )
- Operating temperature range : -40°C to + 125 °C
- Packing : 13" reel, machine-ready ,embossed plastic tape ( 3,500 parts per full reel).