

SDC2D18HP SERIES

Low Profile Shielded Power Inductors



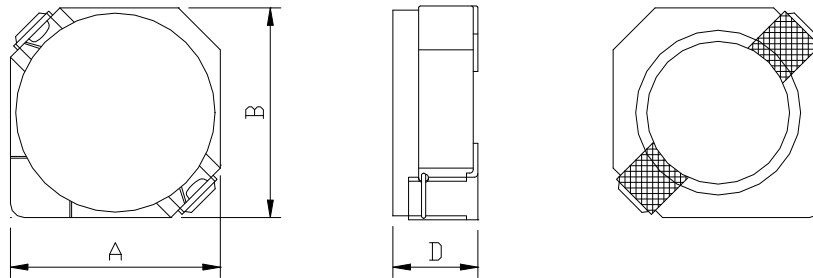
RoHS Compliant

PART NUMBERING SYSTEM

<u>SDC</u>	<u>2D18HP</u>	—	<u>100N</u>	—	<u>LF</u>
TYPE	DIMENSIONS		INDUCTANCE		LEAD FREE

SHAPES AND DIMENSIONS

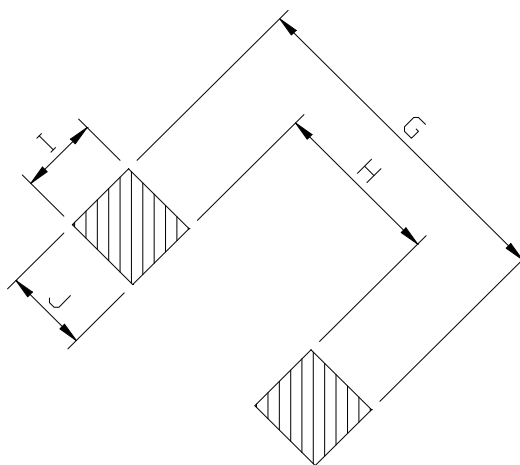
UNIT : mm



A=3.20 max. B=3.20 max. D=2.0 max.

RECOMMENDED PATTERNS

UNIT : mm



G= 4.3 H= 1.7 I = 1.3 J = 1.3

SDC2D18HP SERIES

Low Profile Shielded Power Inductors



RoHS Compliant

ELECTRICAL CHARACTERISTICS :

PART NUMBER	INDUCTANCE (μ H)	DCR (m Ω) (Max.)	Isat (A) (Max.)	Irms (A) (Max.)	TEST FREQ. (f)
SDC2D18HP-1R7N-LF	1.7 \pm 30%	44	1.85	2.20	100KHz
SDC2D18HP-2R2N-LF	2.2 \pm 30%	60	1.60	1.90	100KHz
SDC2D18HP-3R3N-LF	3.3 \pm 30%	86	1.45	1.55	100KHz
SDC2D18HP-4R7N-LF	4.7 \pm 30%	140	1.20	1.20	100KHz
SDC2D18HP-6R3N-LF	6.3 \pm 30%	160	1.05	1.25	100KHz
SDC2D18HP-100N-LF	10 \pm 30%	245	0.85	0.90	100KHz
SDC2D18HP-150N-LF	15 \pm 30%	345	0.70	0.64	100KHz

- Isat : DC current at which the inductance drops 35% (typ) from its value without current.
- Irms: The actual current when temperature of coil becomes $\Delta 40^{\circ}\text{C}$. (Ta= +25 $^{\circ}\text{C}$)
- Operating temperature range -40 $^{\circ}\text{C}$ to +125 $^{\circ}\text{C}$, Electrical specifications at 25 $^{\circ}\text{C}$.
- Packing : 13" reel, machine-ready ,embossed plastic tape (3,500 parts per full reel).
- PLATING / SOLDER : TIN-SILVER-COPPER (95.5%/4.0%/0.5%)