

## SDC3D14 SERIES

### Low Profile Shielded Power Inductors



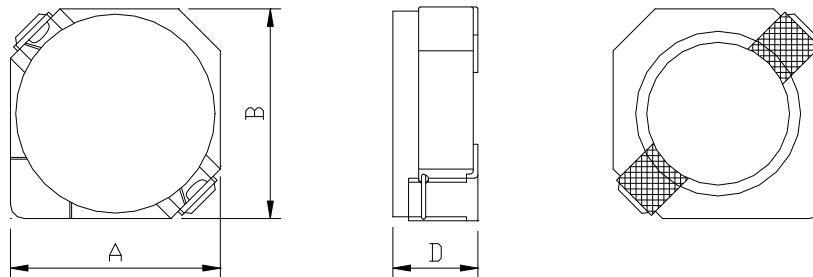
RoHS Compliant

#### PART NUMBERING SYSTEM

<b>SDC</b>	<b>3D14</b>	<b>—</b>	<b>1R2N</b>	<b>—</b>	<b>LF</b>
TYPE	DIMENSIONS		INDUCTANCE		LEAD FREE

#### SHAPES AND DIMENSIONS

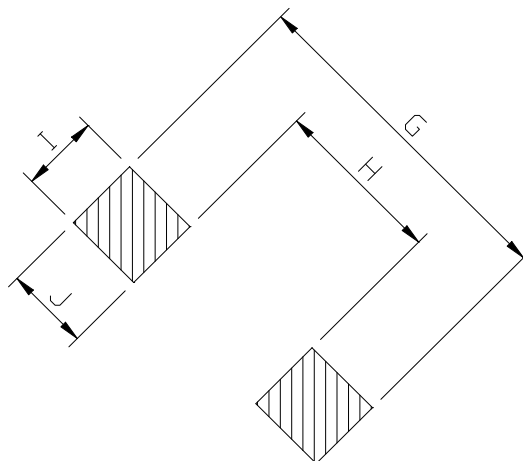
UNIT : mm



**A=4.00 max. B=4.00 max. D=1.5 max.**

#### RECOMMENDED PATTERNS

UNIT : mm



**G= 5.2 H= 2.4 I = 1.5 J = 1.4**

## SDC3D14 SERIES

### Low Profile Shielded Power Inductors



RoHS Compliant

#### SPECIFICATION TABLE

PART NUMBER	INDUCTANCE ( $\mu$ H)	DCR (m $\Omega$ ) (max)	Isat (A) ( Max. )	Irms (A) ( Max. )	TEST FREQ. ( f )
SDC3D14-1R2N-LF	1.2 $\pm$ 30%	45	2.15	2.20	100KHz
SDC3D14-1R7N-LF	1.7 $\pm$ 30%	63	1.85	2.00	100KHz
SDC3D14-2R2N-LF	2.2 $\pm$ 30%	69	1.60	1.75	100KHz
SDC3D14-2R7N-LF	2.7 $\pm$ 30%	88	1.45	1.36	100KHz
SDC3D14-3R3N-LF	3.3 $\pm$ 30%	100	1.35	1.24	100KHz
SDC3D14-3R9N-LF	3.9 $\pm$ 30%	135	1.15	1.12	100KHz
SDC3D14-4R7N-LF	4.7 $\pm$ 30%	150	1.10	0.96	100KHz
SDC3D14-8R2N-LF	8.2 $\pm$ 30%	238	0.82	0.74	100KHz
SDC3D14-100N-LF	10 $\pm$ 30%	262	0.75	0.69	100KHz
SDC3D14-120N-LF	12 $\pm$ 30%	350	0.67	0.60	100KHz
SDC3D14-150N-LF	15 $\pm$ 30%	488	0.60	0.58	100KHz
SDC3D14-220N-LF	22 $\pm$ 30%	575	0.52	0.43	100KHz

- Isat : DC current at which the inductance drops 35% (typ) from its value without current.
- Iirms: The actual current when temperature of coil becomes  $\Delta 40^{\circ}\text{C}$  . ( Ta=+25 $^{\circ}\text{C}$  )
- Operating temperature range -40 $^{\circ}\text{C}$  to +125 $^{\circ}\text{C}$  , Electrical specifications at 25 $^{\circ}\text{C}$ .
- Packing : 13" reel, machine-ready ,embossed plastic tape ( 2,000 parts per full reel).