

## SDC3D28 SERIES

### SMD Shielded Power Inductors



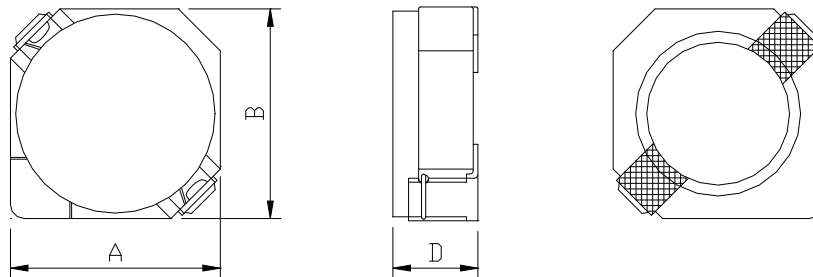
RoHS Compliant

#### PART NUMBERING SYSTEM

<u><b>SDC</b></u>	<u><b>3D28</b></u>	—	<u><b>6R8N</b></u>	—	<u><b>LF</b></u>
TYPE	DIMENSIONS		INDUCTANCE		LEAD FREE

#### SHAPES AND DIMENSIONS

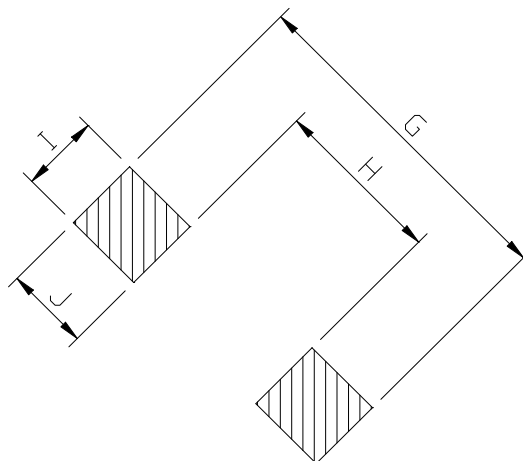
UNIT : mm



**A=4.00 max. B=4.00 max. D=3.0 max.**

#### RECOMMENDED PATTERNS

UNIT : mm



**G= 5.2    H= 2.4    I = 1.5    J = 1.4**

## SDC3D28 SERIES

### SMD Shielded Power Inductors



RoHS Compliant

#### FEATURES

1. **Compact, low profile shielded power inductor** - only **3,0 mm** high, **4.0 mm** square
2. **3.3  $\mu$ H** part handles **2.0 Amps** of saturating current!
3. Inductance range from **3.3uH to 47uH** .
4. **RoHS-compliant**. 260°C compatible.

#### SPECIFICATION TABLE

PART NUMBER	INDUCTANCE ( $\mu$ H)	DCR (m $\Omega$ ) (Max.)	Isat (A) ( Max. )	Irms (A) ( Max. )	TEST FREQ. ( f )
SDC3D28-3R3N-LF	3.3 $\pm$ 30%	72.1	2.00	1.85	100KHz/1V
SDC3D28-4R7N-LF	4.7 $\pm$ 30%	88.3	1.65	1.62	100KHz/1V
SDC3D28-6R8N-LF	6.8 $\pm$ 30%	119	1.24	1.32	100KHz/1V
SDC3D28-100N-LF	10 $\pm$ 30%	145	1.05	1.18	100KHz/1V
SDC3D28-150N-LF	15 $\pm$ 30%	213	0.90	1.02	100KHz/1V
SDC3D28-220N-LF	22 $\pm$ 30%	335	0.76	0.74	100KHz/1V
SDC3D28-330N-LF	33 $\pm$ 30%	481	0.58	0.63	100KHz/1V
SDC3D28-470N-LF	47 $\pm$ 30%	599	0.48	0.56	100KHz/1V

- Isat : DC current at which the inductance drops 35% (typ) from its value without current.
- Irms: The actual current when temperature of coil becomes  $\Delta 40^{\circ}\text{C}$  . ( Ta=+25°C )
- Operating temperature range -40°C to +125°C , Electrical specifications at 25°C.
- Packing : 13" reel, machine-ready ,embossed plastic tape ( 2,000 parts per full reel)..