

## SS1608 SERIES ~ Spring Air Core Inductors

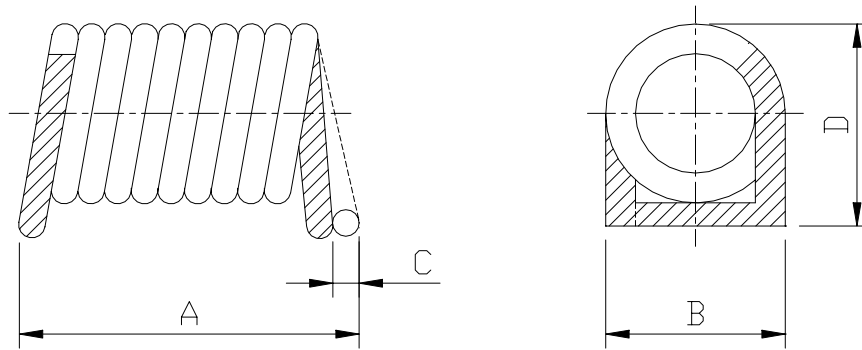


RoHS Compliant

### FEATURES

- SMD type air core inductor .
- Tape / Reel packaging available for auto-insertion .
- High Q coils .

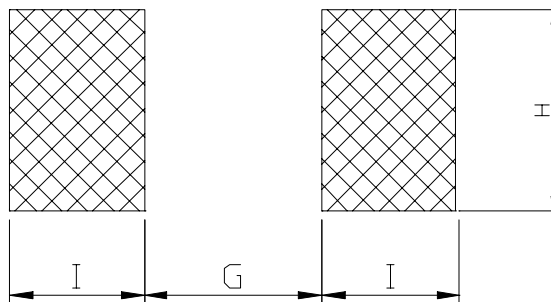
### SHAPES AND DIMENSIONS



**A=2.2 Max. B=1.6 Max. C=0-0.3 D=1.9 Max.**

### RECOMMENDED PATTERN

UNIT : mm



**G=0.75±0.1 H=1.78 Ref. I=0.75±0.05**

## SS1608 SERIES ~ Spring Air Core Inductors



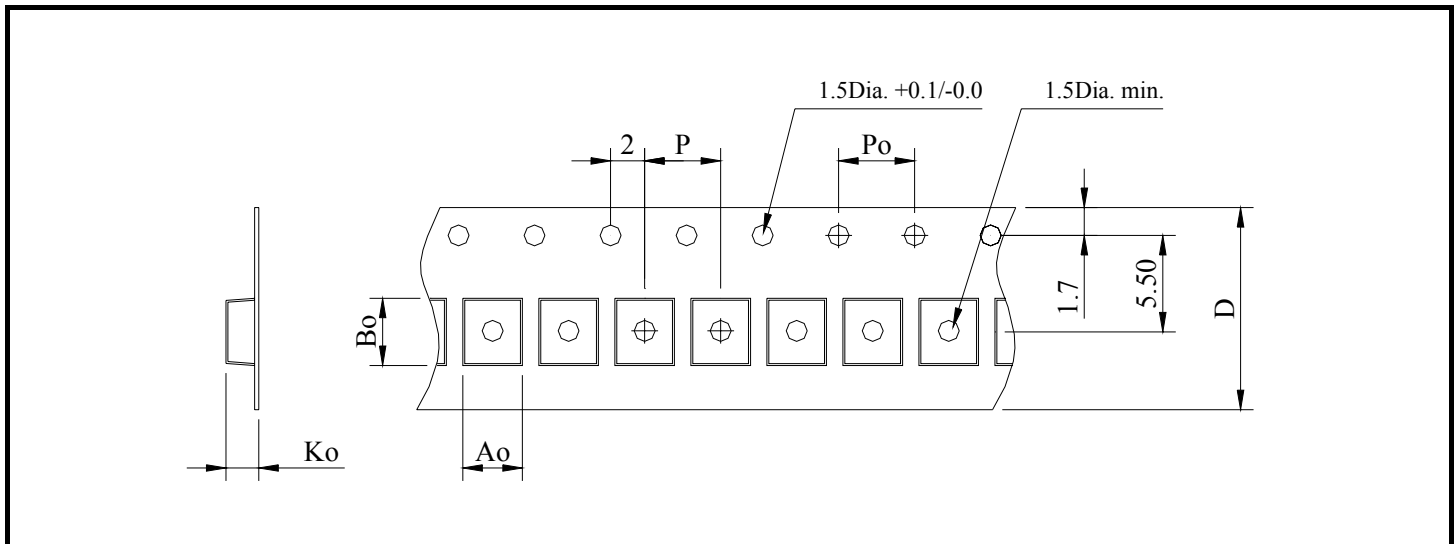
RoHS Compliant

### SS1608 SERIES

| PART NUMBER    | INDUCTANCE<br>(nH) | TEST FREQ.<br>(MHZ) | Q.<br>(Min.) | DCR (mΩ)<br>(Max) | SRF (MHz)<br>(Min.) | Irms (mA)<br>(Max) |
|----------------|--------------------|---------------------|--------------|-------------------|---------------------|--------------------|
| SS1608-3N9K-LF | 3.9±10%            | 300                 | 80           | 3.0               | 3000                | 950                |
| SS1608-4N7K-LF | 4.7±10%            | 300                 | 80           | 3.6               | 3000                | 900                |
| SS1608-5N6K-LF | 5.6±10%            | 300                 | 80           | 3.8               | 3000                | 950                |
| SS1608-6N8K-LF | 6.8±10%            | 300                 | 80           | 4.5               | 3000                | 900                |
| SS1608-8N2K-LF | 8.2±10%            | 300                 | 80           | 5.3               | 3000                | 840                |
| SS1608-10NK-LF | 10±10%             | 300                 | 70           | 6.9               | 3000                | 600                |
| SS1608-12NK-LF | 12±10%             | 300                 | 70           | 8.3               | 3000                | 600                |
| SS1608-15NK-LF | 15±10%             | 300                 | 70           | 11.5              | 2500                | 500                |
| SS1608-18NK-LF | 18±10%             | 300                 | 70           | 12.8              | 2500                | 500                |
| SS1608-22NK-LF | 22±10%             | 300                 | 70           | 11.3              | 2400                | 550                |
| SS1608-27NK-LF | 27±10%             | 300                 | 70           | 17.0              | 1600                | 500                |
| SS1608-33NK-LF | 33±10%             | 300                 | 70           | 26.9              | 1600                | 320                |
| SS1608-39NK-LF | 39±10%             | 300                 | 70           | 30.7              | 1500                | 320                |
| SS1608-47NK-LF | 47±10%             | 300                 | 70           | 34.5              | 1500                | 320                |
| SS1608-56NK-LF | 56±10%             | 300                 | 70           | 38.4              | 1300                | 320                |

\* Operating temperature range : -40°C to +125°C.

### PACKAGING SPECIFICATION



| STAYLE | Q' TY<br>(PCS) | DIMENSIONS (m/m) |               |               |              |              |            |
|--------|----------------|------------------|---------------|---------------|--------------|--------------|------------|
|        |                | $A_o$            | $B_o$         | $K_o$         | $P$          | $P_o$        | $D\pm 0.3$ |
| 13"    | 4,000          | $1.55\pm 0.1$    | $1.65\pm 0.1$ | $1.75\pm 0.1$ | $4.0\pm 0.1$ | $4.0\pm 0.1$ | 12.0       |