

## SS2012 SERIES ~ Spring Air Core Inductors

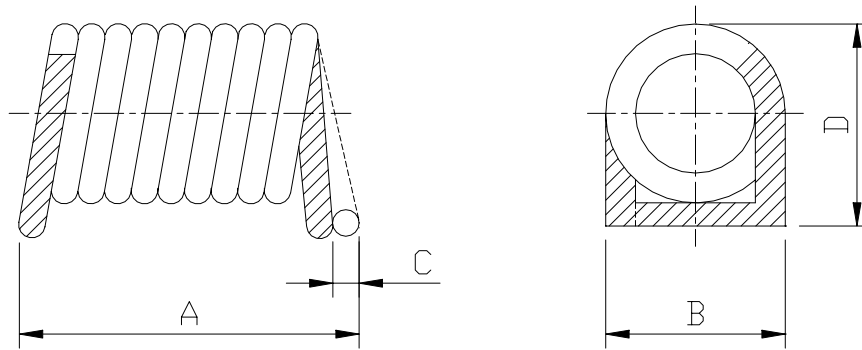


RoHS Compliant

### FEATURES

- SMD type air core inductor .
- Tape / Reel packaging available for auto-insertion .
- High Q coils .

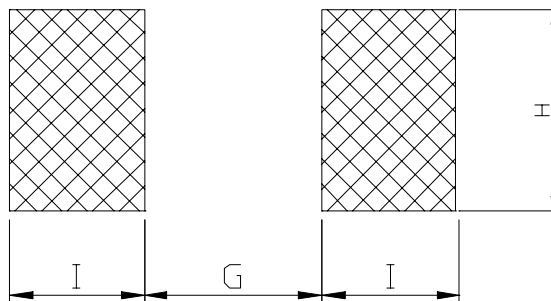
### SHAPES AND DIMENSIONS



**A=2.5 Max. B=1.6 Max. C=0-0.3 D=1.9 Max.**

### RECOMMENDED PATTERNS

UNIT : mm



**G=0.76±0.1 H=1.78 Ref. I=1.02±0.05**

## SS2012 SERIES ~ Spring Air Core Inductors



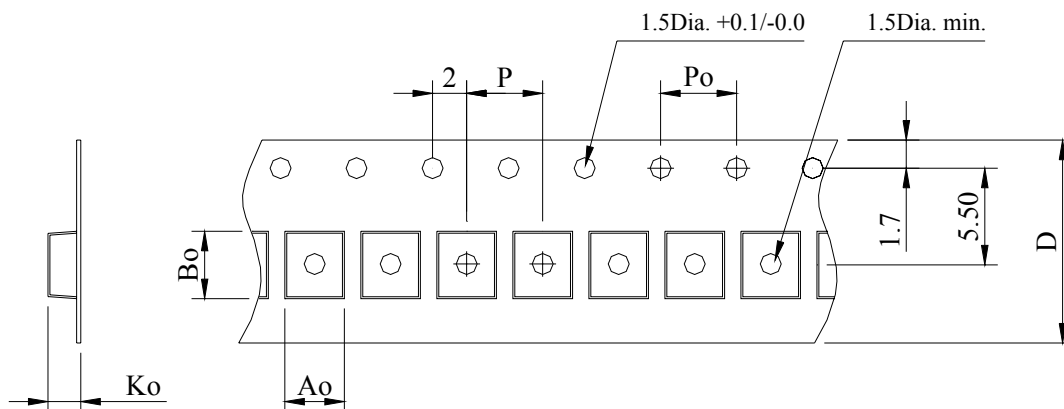
RoHS Compliant

### SS2012 SERIES

PART NUMBER	INDUCTANCE	TEST FREQ.	Q.	DCR (mΩ)	SRF (MHz)	I <sub>rms</sub> (mA)
	(nH)	(MHz)	(Min.)	(Max)	(Min.)	(Max)
SS2012-3N9K-LF	3.9±10%	300	80	2.6	3000	1200
SS2012-4N7K-LF	4.7±10%	300	80	3.6	3000	900
SS2012-5N6K-LF	5.6±10%	300	80	3.7	3000	950
SS2012-6N8K-LF	6.8±10%	300	80	4.5	3000	900
SS2012-8N2K-LF	8.2±10%	300	80	5.3	3000	840
SS2012-10NK-LF	10±10%	300	70	5.4	3000	900
SS2012-12NK-LF	12±10%	300	70	6.3	3000	900
SS2012-15NK-LF	15±10%	300	70	7.2	2500	900
SS2012-18NK-LF	18±10%	300	70	12.5	2500	500
SS2012-22NK-LF	22±10%	300	70	12.9	2400	550
SS2012-27NK-LF	27±10%	300	70	14.5	1600	550
SS2012-33NK-LF	33±10%	300	70	18.7	1600	500
SS2012-39NK-LF	39±10%	300	70	25.7	1500	380
SS2012-47NK-LF	47±10%	300	70	34.5	1500	320
SS2012-56NK-LF	56±10%	300	70	38.4	1300	320
SS2012-R68K-LF	68±10%	300	70	42.2	1300	320

\* Operating temperature range : -40°C to +125°C.

### PACKAGING SPECIFICATION



STAYLE	Q' TY (PCS)	DIMENSIONS (m/m)					
		Ao	Bo	Ko	P	Po	D±0.3
13"	4,000	1.35±0.1	2.35±0.1	1.75±0.1	4.0±0.1	4.0±0.1	12.0